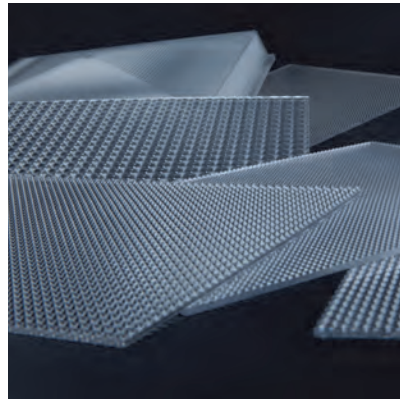
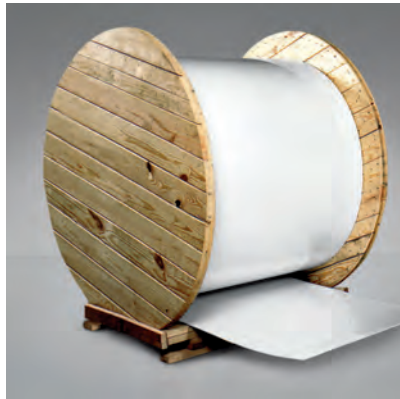
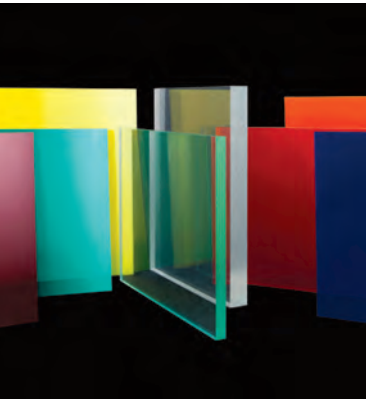


PLASKOLITE

Product Guide



OPTIX® Acrylic Sheet

DURAPLEX® Impact Modified Acrylic Sheet

VIVAK® PETG Sheet

ABS Sheet

Roll Stock Sign Grade Acrylic Sheet

OPTIX® LD Light Diffusing Sheet

Colored Acrylic Sheet

Patterned Acrylic Sheet

Picture Frame Glazing Sheet

FABBACK® Extruded Mirror Sheet

Colored Mirror Acrylic Sheet

Marine Grade Acrylic Mirror Sheet

Aircraft Grade Polycarbonate Mirror Sheet

See-Thru Mirror Sheet

First-Surface Mirror Sheet

ARmadillo Scratch-Resistant Coatings

PETG Mirror Sheet

Polycarbonate Mirror Sheet

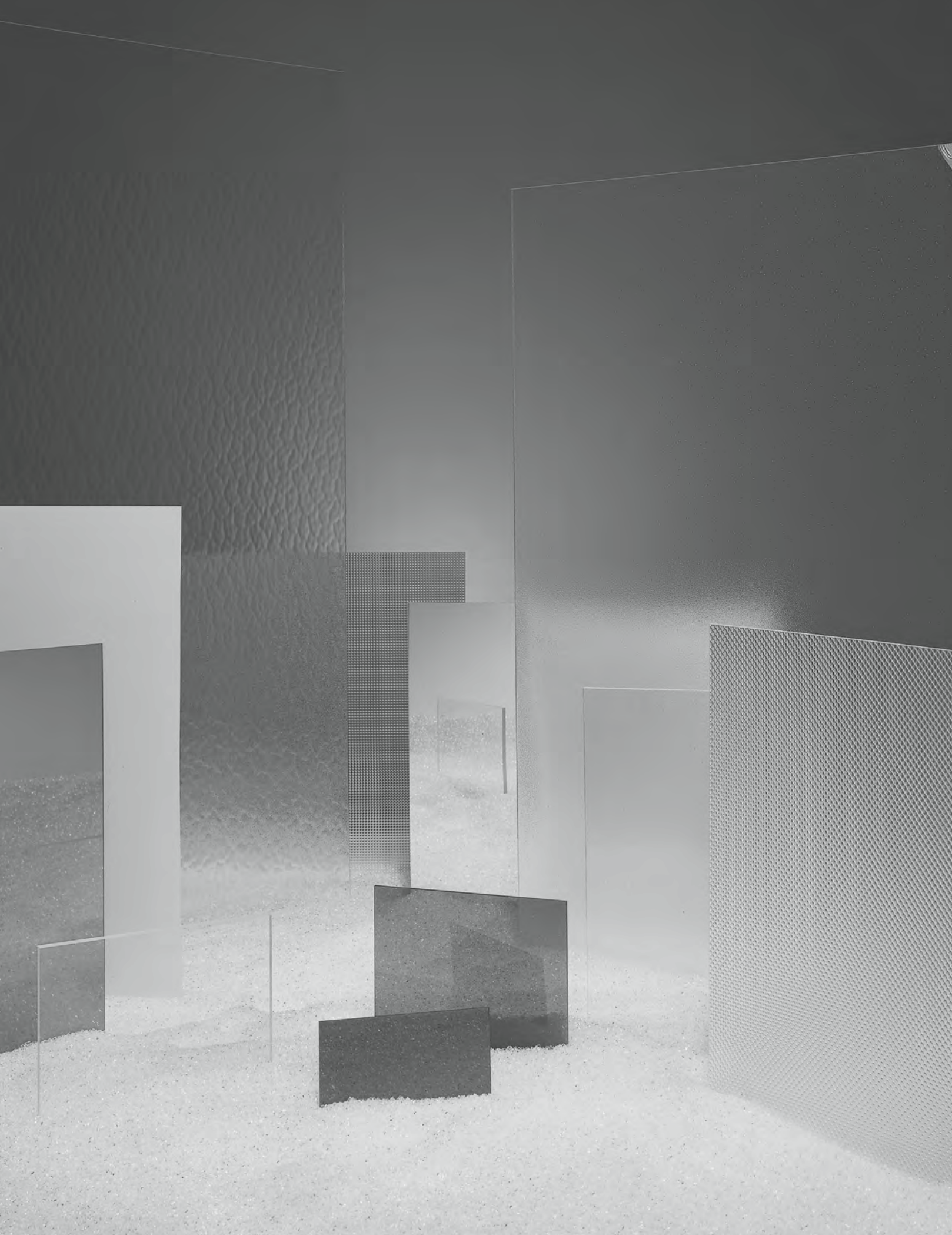
KSH® Lighting Lens Series

Complete Product And Packaging Specifications Inside

Distributed by:  **Polymershapes**

Call: 1 (866) 437-7427

Email: info@polymershapes.com



CONTENTS

Welcome to the Plaskolite Product Guide. In it you will find all the information you need to specify, order and stock Plaskolite’s complete line of acrylic, ABS, PETG and thermoplastic mirror sheet products. For additional information, or to discuss your order with an Inside Sales representative, call Plaskolite at 1-800-848-9124.

The Plaskolite Quality Commitment	2
OPTIX® Acrylic Sheet Properties	3
OPTIX® Acrylic Flat Sheet	5
OPTIX® DA Digital Acrylic Sheet.....	9
Run-to-Size Program.....	10
DURAPLEX® Impact Modified Acrylic Flat Sheet.....	11
Sign Grade Roll Stock & Flat Acrylic Sheet	13
OPTIX® LD Light Diffusing Acrylic Sheet	15
OPTIX® Colored Acrylic Flat Sheet.....	16
OPTIX® Frost/OPTIX® 95	18
OPTIX® Patterned Non-Glare Acrylic Flat Sheet	19
Picture Frame Glazing Sheet.....	20
Patterned Acrylic Sheet.....	21
VIVAK® PETG.....	22
ABS Sheet	23
Lighting Sheet	24
KSH® Lighting Lens Series.....	26
FABBACK® Extruded Mirror Clear Acrylic Sheet.....	30
FABBACK® Extruded Mirror Color Acrylic Sheet	32
Marine Grade Acrylic Mirror Sheet	33
Aircraft Grade Polycarbonate Mirror Sheet	33
See-Thru Mirror Sheet	33
First Surface (2 Sided) Mirror Sheet	34
Textured Acrylic Mirror Sheet	34
ARmadillo Scratch Resistant Coating	35
PETG Mirror Sheet.....	36
Polycarbonate Mirror Sheet.....	37
Protective Coverings & Backings For Mirror Sheet.....	38
Plaskolite, LLC. Limited Warranty.....	39
Plaskolite, LLC. Terms & Conditions.....	40

QUALITY COMMITMENT

The Plaskolite Quality Commitment

Plaskolite is a leading manufacturer of acrylic sheet, impact modified acrylic sheet, acrylic resin, polystyrene sheet and acrylic mirror sheet. Since 1950, it has built an excellent reputation for providing high quality products and responsive customer service.

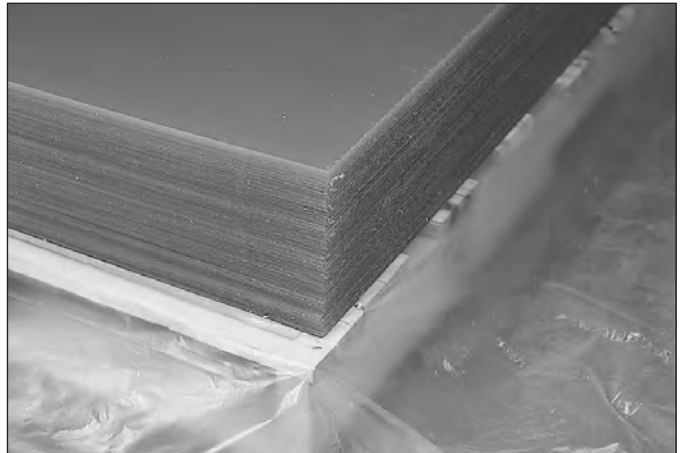
Plaskolite's commitment to quality extends over every aspect of its business. From its 350,000 sq. ft. manufacturing and distribution headquarters in Columbus, Ohio, and its 245,000 sq. ft. manufacturing facility in Zanesville, Ohio, Plaskolite delivers flawless quality sheet and resin to customers worldwide. ISO 9001:2008 quality standards are maintained throughout, including a fully integrated manufacturing system that converts acrylic monomer into acrylic resin and then into acrylic sheet.

To better serve customers, sheet can be ordered in customized **"Run-to-Size"** dimensions and special patterns and thicknesses. Inside sales representatives use automated order and shipping tracking systems to provide customers with up-to-the-minute information on their orders.

From manufacturing through customized product offerings, packing, shipping and order tracking, Plaskolite is committed to delivering the highest quality products and service to its customers.

Plaskolite's acrylic sheets are covered under the following:

- International Code Council Evaluation Service (ICC-ES) listings (incorporates former ICBO, SBCCI, BOCA and NES certifications) as CC2 Plastics
- ANSI Z97.1 Safety Glazing Requirements
- ANSI Z26.1 Motor Vehicle Safety Glazing Standard
- Underwriters Laboratories (UL) listings UL 94HB
- Miami-Dade County Product Control Notice of Acceptance – Clear Plastics
- 10-year limited warranty on all clear acrylic sheets
- ASTM D-4802 - B-1 Plastics



PLASKOLITE
MATERIAL
EXCELLENCE

ACRYLIC SHEET PROPERTIES

OPTIX® Acrylic Sheet Properties

OPTIX is the tradename for Plaskolite's continuously processed, high quality acrylic sheet. OPTIX acrylic sheet is ideal for almost any fabrication or glazing application. OPTIX exceeds industry standards for quality and safety and its impact-resistance will prohibit the sheet from shattering into sharp edged pieces like glass. Special U.V. stabilization protects the sheet from yellowing and it's backed by a ten year limited warranty. Primary applications for OPTIX include fabrication, picture framing, skylights, displays, signage, lighting and point of purchase.

OPTIX acrylic is available in colored, impact modified, green edged and patterned sheet. For fabricating convenience, OPTIX Acrylic Sheet can be ordered in custom sizes and thicknesses using Plaskolite's "Run-to-Size" program. For more information on OPTIX Acrylic Sheet, call 1-800-848-9124.

Physical Properties

OPTIX acrylic sheet is crystal clear, durable, weather-resistant and lightweight for easy transport and storage. It also offers the advantages of high molecular weight for ease of fabrication, low heat loss for economy and an attractive clear edge color.

OPTIX acrylic sheet is available in a variety of colors, non-glare, patterned, translucent and transparent colors. It is produced in thicknesses ranging from .040" to 1.0" and sheet widths up to 105".

Safety Concerns

OPTIX acrylic sheet is a combustible thermoplastic. Acrylic sheet will ignite and burn if placed in an open flame or in contact with any other source of ignition. When working or storing OPTIX acrylic sheet, please be aware of the thermoplastic properties and take into consideration fire precautions.



Sheet Tolerances (on line)

OPTIX acrylic sheet is produced to tolerances of $\pm 1/16$ " length and width on sizes 42" and smaller. Sheet sizes greater than 42" up to 60" are produced to length and width tolerances of $\pm 3/32$ ". All sheet sizes greater than 60" produced to length and width tolerances of $\pm 1/8$ " (-0, +1/4 on 48" x 96" stock sizes and above).

Sheet Squareness (on line)

OPTIX acrylic sheet is produced to squareness tolerances of $\pm 1/8$ " on sizes 42" and smaller. Sheet sizes greater than 42" to 60" squareness is $\pm 3/16$ " and sheet sizes greater than 60" squareness is $\pm 1/4$ ".

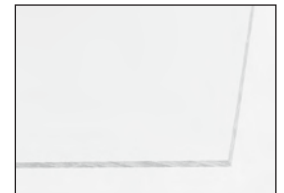


Sheet Thickness

OPTIX acrylic sheet is produced within industry standards of $\pm 10\%$ on thickness. Minimum thicknesses available. Call for quotation and production minimums.

Run-to-Size Sheet

Custom sizes, thicknesses, colors, masking and packaging are available upon request. Call for price quotation, production minimums and delivery information.



Sheet Edges

Edges are supplied slit, hot sheered and saw cut.

Sheet Masking

OPTIX acrylic is stocked with a 2mil Co-Ex masking, on two sides. Papermasking, TG paper replacement and 3mil formable film options are available upon request.

ACRYLIC SHEET



OPTIX® Acrylic Sheet Properties

Physical Properties	ASTM Test Method	Units	Values
Specific Gravity	D-792		1.19
Optical Refractive Index	D-542		1.49
Light Transmittance	D-1003		
Total		%	92
Haze		%	2
Sound Transmission	E 90 E 413	db	27
Water Absorption	D-570	% By Weight	0.40

Mechanical	ASTM Test Method	Units	Values
Tensile Strength - Max.	D-638	psi	11,030
Tensile Elongation - Max.		%	5.8
Tensile Modulus of Elasticity		psi	490,000
Flexural Strength - Max.	D-790	psi	17,000
Flexural Modulus of Elasticity		psi	490,000
Izod Impact Strength - Molded Notch	D-256	ft-lb/in Notch	0.4
Izod Impact Strength - Milled Notch		ft-lb/in Notch	0.28
Tensile Impact Strength	D-1822	ft-lb/in ²	20
Abrasion Resistance Change in Haze	D-1044		
0 cycles		Haze, %	0
10 cycles		Haze, %	11.2
50 cycles		Haze, %	24.0
200 cycles		Haze, %	24.9
Rockwell Hardness	D-785		M-95

Thermal	ASTM Test Method	Units	Values
Maximum Recommended Continuous Service Temperature		°F	170-190
Softening Temperature		°F	210-220
Melting Temperature		°F	300-315
Deflection Temperature 264 psi	D-648	°F	203
66 psi		°F	207
Coefficient of Thermal Expansion -30 to 30°C	D-696	in/(in-°F) x10 ⁻⁵	3.0
Thermal Conductivity	C-177	BTU-ft/(hr-ft ² -°F)	0.075
Flammability (Burning Rate)	D-635	in/minute	1.019
Smoke Density Rating	D-2843	%	3.4
Self-Ignition Temperature	D-1929	°F	833
Flame Spread Index	E-84		115
Smoke Developed Index			550

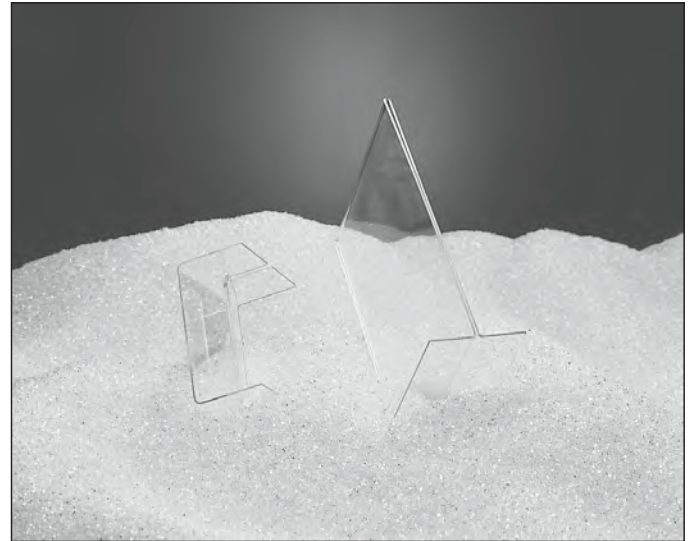
Chemical	ASTM Test Method	Units	Values
Resistance to Stress - Critical Craze Stress to:	ARTC modification of MIL-P-6997		
Isopropyl Alcohol		psi	900
Lacquer Thinner		psi	500
Toluene		psi	1,300
Solvesso 100		psi	1,600

These suggestions and data are based on information we believe to be reliable. They are offered in good faith, but without guarantee, as conditions and methods of use are beyond our control. We recommend that the prospective user determine the suitability of our materials and suggestions before adopting them on a commercial scale.



OPTIX® Acrylic Flat Sheet

OPTIX is a continuously processed acrylic sheet that is crystal clear, impact resistant and weather resistant. It offers high molecular weight for superior thermoforming, bending and flame polishing. Thicknesses available: .040"–1.0" (1mm–25mm). Widths up to 104". Run-to-Size Sheet offered. Call for non-stock sizes and custom thicknesses.



.060" (1.5mm)

Item#	Size	Sq. Ft.	Pack Qty.	Skid Qty.
1AG000QA	48" x 96" Polyfilm	32.00	5 Pk.	
1AG000TA	48" x 96" Polyfilm	32.00	Bulk	180
1AG000UA	48" x 96" Papermask	32.00	5 Pk.	
1A0000WA	48" x 96" Papermask	32.00	Bulk	180
1AGL340A	49" x 97" Polyfilm	33.00	Bulk	125

Acrylic Accessories

Item #	Description	Pack Qty.
1999999A	Plastic Cutting Tool	12
1999990A	Plastic Cleaner	12

.080" (2.0mm)

Item #	Size	Sq. Ft.	Pack Qty.	Skid Qty.
11G0810A	8" x 10"	.55	15 Pk.	
11G0670A	18" x 24"	3.00	10 Pk.	
11G0075A	24" x 48"	8.00	10 Pk.	
11G0830A	28" x 30"	5.83	12 Pk.	
11G0184A	30" x 32"	6.66	10 Pk.	
11G0188A	30" x 36"	7.50	10 Pk.	
1AG0500A	30" x 60"	12.50	5 Pk.	
11G0231A	32" x 44"	9.78	10 Pk.	
1AG0575A	36" x 72"	18.00	5 Pk.	
1AG0595A	48" x 96"	32.00	5 Pk.	
1AG0389A	48" x 96" Polyfilm	32.00	Bulk	130
1AG1684A	49" x 97" Polyfilm	33.00	Bulk	100

Run-to-Size Available

ACRYLIC SHEET



OPTIX® Acrylic Flat Sheet

.093" (2.3mm)

Item #	Size	Sq. Ft.	Pack Qty.	Skid Qty.
1AU0515A	11" x 14"	1.07	10 Pk.	
1AU0187A	18" X 24"	3.00	10 Pk	
1AU0202A	20" x 32"	4.44	10 Pk.	
1AU0228A	24" x 28"	4.67	10 Pk.	
1AU0238A	24" x 30"	5.00	10 Pk.	
1AU0222A	24" x 36"	6.00	10 Pk.	
1AU0262A	24" x 48"	8.00	10 Pk.	
1AU0252A	26" x 28"	5.06	10 Pk.	
1AU0254A	28" x 30"	5.83	10 Pk.	
1AU0264A	28" x 32"	6.22	10 Pk.	
1AU0314A	30" x 32"	6.66	10 Pk.	
1AU0364A	30" x 36"	7.50	10 Pk.	
1AU0395A	30" x 60"	12.50	5 Pk.	
1AU0394A	30" x 60"	12.50	10 Pk.	
1AU0434A	32" x 32"	7.11	10 Pk.	
1AU0464A	32" x 40"	8.89	10 Pk.	
1AU0474A	32" x 44"	9.78	10 Pk.	
1AU0564A	36" x 36"	9.00	10 Pk.	
1AU0593A	36" x 48"	12.00	10 Pk.	
1AU0611A	36" x 60"	15.00	10 Pk.	
1AU0660A	36" x 72"	18.00	5 Pk.	
1AU0664A	36" x 72"	18.00	10 Pk.	
1AU0803A	48" x 96"	32.00	5 Pk.	
1AU0800A	48" x 96" 2 mil Polyfilm	32.00	Bulk	112
1AU0799A	48" x 96" Papermask	32.00	Bulk	112
1AU0913A	60" x 96" Polyfilm	40.00	5 Pk.	
1AU0911A	60" x 96" 2 mil Polyfilm	40.00	Bulk	90

.100" (2.5mm)

Item #	Size	Sq. Ft.	Pack Qty.	Skid Qty.
11G0606A	16" x 20"	2.22	10 Pk.	
1AG0918A	18" x 24"	3.00	5 Pk.	
11G0018A	18" x 24"	3.00	10 Pk.	
1AG0930A	20" x 32"	4.44	5 Pk.	
11G0630A	20" x 32"	4.44	10 Pk.	

.100" (2.5mm) - continued

Item #	Size	Sq. Ft.	Pack Qty.	Skid Qty.
1AG0959A	24" x 28"	4.67	5 Pk.	
11G0659A	24" x 28"	4.67	10 Pk.	
1AG0961A	24" x 30"	5.00	5 Pk.	
11G0661A	24" x 30"	5.00	10 Pk.	
1AG0970A	24" x 36"	6.00	5 Pk.	
1AG0975A	24" x 48"	8.00	5 Pk.	
11G0675A	24" x 48"	8.00	10 Pk.	
1AG0995A	26" x 28"	5.06	5 Pk.	
11G0760A	28" x 28"	5.44	10 Pk.	
1AG1062A	28" x 30"	5.83	5 Pk.	
11G0762A	28" x 30"	5.83	10 Pk.	
1AG1063A	28" x 32"	6.22	5 Pk.	
11G0763A	28" x 32"	6.22	10 Pk.	
1AG1082A	30" x 30"	6.25	5 Pk.	
11G0782A	30" x 30"	6.25	10 Pk.	
1AG1084A	30" x 32"	6.66	5 Pk.	
11G0784A	30" x 32"	6.66	10 Pk.	
1AG1086A	30" x 34"	7.08	5 Pk.	
1AG1088A	30" x 36"	7.50	5 Pk.	
11G0788A	30" x 36"	7.50	10 Pk.	
1AG1100A	30" x 60"	12.50	5 Pk.	
1AG1127A	32" x 40"	8.89	5 Pk.	
11G0827A	32" x 40"	8.89	10 Pk.	
1AG1131A	32" x 44"	9.78	5 Pk.	
11G0831A	32" x 44"	9.78	10 Pk.	
1AG1160A	36" x 36"	9.00	5 Pk.	
11G0860A	36" x 36"	9.00	10 Pk.	
11G0862A	36" x 40"	10.00	10 Pk.	
1AG1165A	36" x 48"	12.00	5 Pk.	
1AG1175A	36" x 72"	18.00	5 Pk.	
1AG1180A	38" x 50"	13.19	5 Pk.	
1AG1190A	48" x 72"	24.00	5 Pk.	
1AG1195A	48" x 96"	32.00	5 Pk.	
1AG0988A	48" x 96" Polyfilm	32.00	Bulk	112

ACRYLIC SHEET



.118" (3.0mm)

Item #	Size	Sq. Ft.	Pack Qty.	Skid Qty.
1AG1549A	24" x 48"	8.00	5 Pk.	
1AG1700A	30" x 60"	12.50	5 Pk.	
1AG3622A	36" x 72"	18.00	4 Pk.	
1AG1775A	36" x 72"	18.00	5 Pk.	
1AG1496A	48" x 96"	32.00	3 Pk.	
1AG1438A	48" x 96" Polyfilm	32.00	Bulk	96
1AG1447A	48" x 96" Papermask	32.00	Bulk	96
1AG3716A	48" x 96" TG Film	32.00	Bulk	96
1AG1450A	48" x 120" Papermask	40.00	Bulk	50
1AG9726A	48" x 120" Polyfilm	40.00	Bulk	50
1AG4555A	49" x 97" Polyfilm	33.00	Bulk	80
1AG1083A	51" x 100" Polyfilm	35.41	Bulk	84
1AG1085A	51" x 100" Papermask	35.41	Bulk	84
1AG4491A	60" x 96" Polyfilm	40.00	Bulk	76
1AG4465A	60" x 96" Papermask	40.00	Bulk	76
1AG2475A	60" x 96" TG Film	40.00	Bulk	76
1AG1738A	61" x 97" Polyfilm	41.06	Bulk	70
1AG1069A	60" x 120" Polyfilm	50.00	Bulk	60
1AG1317A	72" x 96" Polyfilm	48.00	Bulk	60
1AG4473A	72" x 96" Papermask	48.00	Bulk	60
1AG8256A	75" x 100" Polyfilm	62.50	Bulk	30

.177" (4.5mm)

Item #	Size	Sq. Ft.	Pack Qty.	Skid Qty.
1AG8509A	48" x 96" Polyfilm	32.00	Bulk	60
1AG8511A	48" x 96" Papermask	32.00	Bulk	60
1AG3704A	48" x 96" TG Film	32.00	Bulk	60
1AG8516A	49" x 97" Polyfilm	33.00	Bulk	57
1AG3053A	51" x 100" Polyfilm	35.41	Bulk	57
1AG8202A	51" x 100" Papermask	35.41	Bulk	57
1AG8588A	60" x 96" Polyfilm	40.00	Bulk	48
1AG8512A	60" x 96" Papermask	40.00	Bulk	48
1AG9172A	61" x 97" Polyfilm	41.06	Bulk	45
1AG5121A	72" x 96" Polyfilm	48.00	Bulk	40
1AG8824A	72" x 96" Papermask	48.00	Bulk	40
1AG1769A	75" x 100" Polyfilm	62.50	Bulk	25

.187" (4.7mm)

Item #	Size	Sq. Ft.	Pack Qty.	Skid Qty.
1AG8706A	48" x 96"	32.00	2 Pk.	

Run-to-Size Available

ACRYLIC SHEET



OPTIX® Acrylic Flat Sheet

.220" (5.6mm)

Item #	Size	Sq. Ft.	Pack Qty.	Skid Qty.
1AG2123A	18" x 24"	3.00	4 Pk	
1AG2196A	24" x 48" Polyfilm	8.00	4 Pk	
1AG2124A	30" x 36" Polyfilm	7.50	4 Pk	
1AG3623A	36" x 72" Polyfilm	18.00	3 Pk	
1AG2180A	48" x 96" Polyfilm	32.00	2 Pk	
1AG9412A	48" x 96" Polyfilm	32.00	Bulk	50
1AG9400A	48" x 96" Papermask	32.00	Bulk	50
1AG3705A	48" x 96" TG Film	32.00	Bulk	50
1AG9244A	49" x 97" Polyfilm	33.00	Bulk	40
1AG7014A	48" x 120" Polyfilm	40.00	Bulk	24
1AG9795A	48" x 120" Papermask	40.00	Bulk	35
1AG9150A	51" x 100" Polyfilm	35.41	Bulk	45
1AG9038A	51" x 100" Papermask	35.41	Bulk	45
1AG9032A	60" x 96" Polyfilm	40.00	Bulk	40
1AG9110A	60" x 96" Papermask	40.00	Bulk	40
1AG2472A	60" x 96" TG Film	40.00	Bulk	40
1AG9015A	60" x 120" Polyfilm	50.00	Bulk	30
1AG9796A	72" x 96" Polyfilm	48.00	Bulk	32
1AG9103A	72" x 96" Papermask	48.00	Bulk	32
1AG3725A	72" x 96" TG Film	48.00	Bulk	32

Run-to-Size Available

.236" (6.0mm)

Item #	Size	Sq. Ft.	Pack Qty.	Skid Qty.
1AG1786A	48" x 96" Polyfilm	32.00	Bulk	48
1AG1941A	48" x 96" Papermask	32.00	Bulk	48
1AG3706A	48" x 96" TG Film	32.00	Bulk	48
1AG8541A	49" x 97" Polyfilm	33.00	Bulk	40
1AG1736A	61" x 97" Polyfilm	41.06	Bulk	25
1AG9238A	75" x 100" Polyfilm	62.50	Bulk	25

.375" (9.5mm)

Item #	Size	Sq. Ft.	Pack Qty.	Skid Qty.
1AG9848A	48" x 96" Papermask	32.00	Bulk	32
1AG5136A	49" x 97" Polyfilm	33.00	Bulk	25

.500" (12.0mm)

Item #	Size	Sq. Ft.	Pack Qty.	Skid Qty.
1AG9900A	48" x 96" Papermask	32.00	Bulk	24
1AG3718A	48" x 96" TG Film	32.00	Bulk	24
1AG4993A	49" x 97" Polyfilm	33.00	Bulk	20

.750" (19.0mm)

Item #	Size	Sq. Ft.	Pack Qty.	Skid Qty.
1AG7801A	48" x 96" Papermask	32.00	Bulk	16

1.00" (25.0mm)

Item #	Size	Sq. Ft.	Pack Qty.	Skid Qty.
1AG7800A	48" x 96" Papermask	32.00	Bulk	12

For custom and non-stock sizes, thicknesses, packaging, masking and tolerance requirements, call for availability and quotation.

DIGITAL ACRYLIC SHEET



Discover an acrylic sheet that doesn't require an adhesion promoter prior to ink application. Developed and tested with a leading manufacturer of digital UV flatbed printers and various ink suppliers, OPTIX DA is produced with a specially formulated acrylic polymer. Optimal adhesion of UV curing inks is achieved without the need for an adhesion promoter prior to ink application. Available in clear, white and non-glare.



Item #	Description	Quantity
DA10001A	.118" 48" x 96", Polyfilm	50
DA10002A	.177" 48" x 96", Polyfilm	25
DA10003A	.220" 48" x 96", Polyfilm	25
DA10020A	.118" 48" x 96", 7328 White Polyfilm	25
NGDA002A	.118" 48" x 96", Clear Non-glare, Printed Adhesive/Polyfilm	48
NGDA003A	.177" 48" x 96", Clear Non-glare, Printed Adhesive/Polyfilm	50
NGDA004A	.220" 48" x 96", Clear Non-glare, Printed Adhesive/Polyfilm	25

Run-to-Size Available

RUN-TO-SIZE PROGRAM

Run-to-Size Program

Plaskolite offers the flexibility of running acrylic, impact modified acrylic or mirror sheet, literally, "Run-to-Size" per any specifications.

This helps save:

- Time
- Eliminates scrap
- Improves productivity
- Reduces wear and tear on equipment
- Improves the relationship with your customers "Giving them a value added product"
- No "year end drop" and unused inventory

Wide range of sizes up to 105"

Thickness range from .040" to 1.0"

Low minimum order requirements

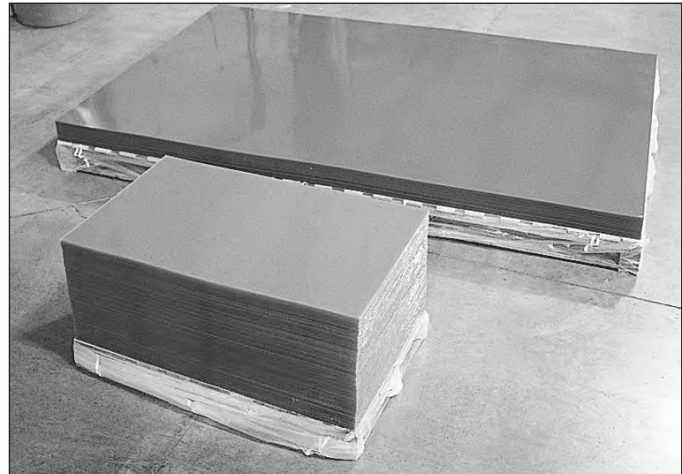
Quick turnaround time—the shortest in the industry

Non-Stock Material:

- Special tolerances, film coverages, thicknesses and sizes available
- Saw cut edges available
- 3,000 lb. minimum order required for a custom thickness of clear acrylic
- 3,000 lb. minimum required for color production run
- 5,000 lb. minimum required for .500" color production run
- 10,000 lb. minimum required for color production run over .500"

On line production minimum thickness, length and width requirements

- Saw cut and slitter/hot knife edges available.
- Sheet edges may vary, please specify preferred edge cut at the time of order.



Thickness	Width	Length
.040"*	5"	14"
.060"***	5"	14"
.080"***	5"	14"
.100"***	5"	14"
.125"***	5"	14"
.177"	28"	20"
.187"	28"	20"
.220"	28"	20"
.236"	28"	20"
.250"	28"	20"
.375"	28"	20"
.500"	30"	30"
.750"***	30"	30"
1.00"***	30"	30"

1,000 lb. minimum per size

* 20,000 lb. minimum required for production run

** 10,000 lb. minimum required for part lengths less than 14 inches

*** 10,000 lb. minimum required per size change

Run-to-Size Sheet Minimums

Colors, DURAPLEX® and Patterns

- 3,000 lb. minimum required for colors
- 20,000 lb. minimum for patterns
- 3,000 lb. minimum required for .500 colors
- 1,000 lb. minimum for required per size change

IMPACT MODIFIED ACRYLIC SHEET



DURAPLEX® Impact Modified Acrylic Sheet

Benefits:

- Superior impact strength; less breakage in shipment and use.
- DURAPLEX is excellent for handling—less breakage in shipment.
- Ideal alternative to Polycarbonate—advantages are weatherability and thermoforming. No drying required.
- Wide range of forming temperatures 275°–375°. Easy to form with short cycles.
- Low orientation—low shrink for drape or clamp forming.
- Custom Impact blends offered—10%, 15%, 25%, 35%, 40%, 50%, 75%, or 100% or any blend needed.
- Thicknesses .040"–.500"; widths up to 105".
- Offered in clear, colors, patterns, and Run-to-Size.
- Available in flat sheet or roll stock.



Custom and non-stock items available. Call for quotation and minimum requirements.

Applications for Impact Modified Acrylic Sheet include displays, skylights, signage, fabrication, windows, doors and any indoor/outdoor application where durability is needed.

DURAPLEX® Impact Modified Acrylic

Item #	Description	Sq. Ft.	Pack Qty.
1X08123A	18" x 24" 40% I Acrylic .080"	3	10 Pack
1X08127A	24" x 48" 40% I Acrylic .080"	8	6 Pack
1X08126A	30" x 60" 40% I Acrylic .080"	12.5	5 Pack
1X08105A	8" x 10" 40% I Acrylic .093"	.5	15 Pack
1X02448A	24" x 48" 40% I Acrylic .093"	8	10 Pack
1X02830A	28" x 30" 40% I Acrylic .093"	5.83	10 Pack
1X03244A	32" x 44" 40% I Acrylic .093"	9.77	10 Pack
1X47435A	48" x 96" 70% I Acrylic .118"	32	5 Pack
1X47433A	48" x 96" 70% I Acrylic .177"	32	3 Pack

Run-to-Size Available

IMPACT MODIFIED ACRYLIC SHEET



DURAPLEX® Impact Modified Acrylic Sheet



Impact Modified Acrylic Sheet

PROPERTY	ASTM	UNITS		30% I	50% I	70% I	100% I
Optical							
Light Transmittance	D-1003	%	92	92	92	90	90
Percent Haze	D-1003	%	2	2	2	<3	<3
Mechanical							
Izod Impact Strength	D-256	ft.lbs./in.	0.4	0.6	0.7	0.9	1.1
Tensile Modulus of Elasticity	D-638	PSI	490,000	376,000	340,000	304,000	250,000
Tensile Strength @ Yield	D-638	PSI	11,030	9,000	8,000	7,100	5,600
Flexural Strength @ Yield	D-790	PSI	17,000	13,690	12,000	10,610	8,300
Rockwell Hardness Method A	D-785		95	78	68	59	46
Thermal							
Deflection Temperature (264psi)	D-648	°F	203	198	194	190	185
Coefficient of Thermal Expansion	D-696	in./in.-°F)	3.0 x 10 ⁻⁵	3.5 x 10 ⁻⁵	4 x 10 ⁻⁵	4.5 x 10 ⁻⁵	5 x 10 ⁻⁵
Self Ignition Temperature	D-1929	°F	833	>850	>850	>850	>850
Burning Rate	D-635	in./min.	1.019	0.85	1.25	1.53	1.97
Smoke Density Rating	D-2843	%	3.4	5.20	8.50	11.5	16.5
Processing							
Density Specific Gravity	D-792		1.19	1.18	1.17	1.16	1.15
Moisture Water Absorption	D-570	% wt. gain	0.4	0.3	0.3	0.3	0.3
Dimensional Molding Shrinkage	D-955	mils./in.	2 -6	3 -6	3 -6	3 -6	3 -6

These values are not intended for specification.

DURAPLEX®/Polycarbonate Comparison

Feature	DURAPLEX	Polycarbonate
Weatherability	Excellent weatherability with no impact reduction	Yellows when exposed to sunlight, lessens impact strength after exposure
Forming	Better melt strength	Low melt strength
Forming Temperature	Wide range (275°F–375°F)	Distinct forming temperature
Optical Clarity	Very clear	Less clear, hazy, shows distortion

Run-to-Size Available

ROLL STOCK ACRYLIC

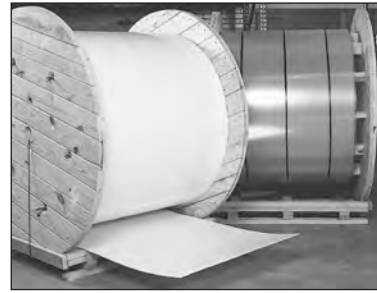
Sign Grade Roll Stock & Flat Acrylic Sheet

Plaskolite offers three grades of acrylic:

- SG OPTIX® Acrylic
- SG05 DURAPLEX® Medium Impact Modified Acrylic
- SG10 DURAPLEX® High Impact Modified Acrylic

Roll Stock Advantages:

- Unlimited lengths, no seams in finished products
- Superior forming characteristics—no predrying, detailed vacuum definition, faster cycle times when compared to continuous cast acrylic
- Better weatherability, color, gloss and clarity than polycarbonate
- Cost competitive when compared to other rigid sign face materials
- Better, total sheet usage—less scrap due to custom size roll widths and lengths



Custom roll widths, lengths, thicknesses and colors available. Call for quotation and delivery information.

Flat sheet is supplied with a 2 mil polyfilm unless otherwise noted. Papermasking or 3 mil formable film also offered.

Thicknesses	Length
.118"	500'
.150"	400'
.177"	350'
.236"	250'

Widths	Colors
30" - 105"	Clear, 7328 White

SG-OPTIX® General Purpose Acrylic Flat Sheet - Clear and Colors Available

Item#	Description	Size	Skid Qty
1X52199A	.118" SG 7328 White	49" x 97"	80
1X06118A	.118" SG 3015 White	49" x 97"	80
1X27260A	.177" SG 7328 White/Papermasked	48" x 96"	57
1X48214A	.177" SG 7328 White	49" x 97"	57
1X06119A	.177" SG 3015 White	49" x 97"	57
1X03212A	.177" SG 2447 White	49" x 97"	57
1X15163A	.177" SG 7328 White	48" x 120"	30
1X25097A	.177" SG 7328 White	51" x 100"	57
1X11287A	.177" SG 7328 White	60" x 120"	25
1X75128A	.177" SG 7328 White	75" x 100"	30
1X27530A	.177" SG 7328 White	75" x 125"	25
1X06120A	.236" SG 3015 White	49" x 97"	45
1X60650A	.236" SG 2447 White	49" x 97"	45

SG05-DURAPLEX® Medium Impact Acrylic Flat Sheet - Clear and Colors Available

Item#	Description	Size	Skid Qty
1X52208A	.118" SG05 Clear	51" x 100"	48
1AG9811A	.177" SG05 Clear	51" x 100"	25
1AG9812A	.177" SG05 Clear	75" x 100"	25
1AG9813A	.177" SG05 Clear	75" x 125"	25
1X11203A	.177" SG05 7328 White	51" x 100"	25
1X11202A	.177" SG05 7328 White	75" x 100"	25
1X11205A	.177" SG05 7328 White	75" x 125"	25

Orientation/Shrinkage/Reversion: SG Sheet exhibits the lowest shrinkage of any extruded acrylic sheet on the market. Cell cast or continuous cast sheet, depending on the manufacturer, may shrink from 0% to 2% in both directions. Plaskolite's sheet performs much like cell cast or continuous cast sheet in relationship to shrinkage.

ROLL STOCK ACRYLIC

Sign Grade Roll Stock & Flat Acrylic Sheet

Physical Property & Performance Summary

OPTIX®

DURAPLEX®

Property	ASTM	UNITS	SG	SG-05	SG-10
Optical					
Light Transmittance	D-1003	%	92	92	90
Percent Haze	D-1003	%	2	2	<3
Mechanical					
Izod Impact Strength (73°F)	D-256	ft.-lbs./in.	0.4	0.7	1.1
Izod Impact Strength (0°F)	D-256	ft.-lbs./in.	0.2	0.2	0.5
Tensile Modulus of Elasticity	D-638	PSI	490,000	340,000	250,000
Tensile Strength @ Yield	D-638	PSI	11,030	8,000	5,600
Flexural Strength @ Yield	D-790	PSI	17,000	12,000	8,300
Rockwell Hardness Method A	D-785		95	68	46
Thermal					
Deflection Temperature (264 psi)	D-648	°F	203	194	185
Coefficient of Thermal Expansion	D-696	in./(in.-°F)	3 x 10 ⁻⁵	4 x 10 ⁻⁵	5 x 10 ⁻⁵
Processing					
Density Specific Gravity	D-792		1.19	1.17	1.15
Moisture Water Absorption	D-570	% wt. gain	0.4	0.3	0.3
Dimensional Molding Shrinkage	D-955	mils./in.	2 - 6	3 - 6	3 - 6

OPTIX®

DURAPLEX®

Suggested Thermoforming Conditions

Property	UNITS	SG	SG-05	SG-10	Cast Acrylic
Thermoforming for Sheet Thickness 0.100" to 0.375"					
Optimal Forming Temperature	°F	320	315	310	380
Forming Temperature Range	°F	270-350	270-350	270-350	350-390
Heating Time Two Sided Infrared	Minutes	1 - 10	1 - 10	1 - 10	2 - 25
Cooling Time	Minutes	0.5 - 4	0.5 - 4	0.5 - 4	1 - 7
Optimal Mold Temperature	°F	180	175	170	190
Free Shrinkage at Forming Temperature					
Machine Direction	%	1 - 3	1 - 3	1 - 3	0 - 2
Transfer Direction	%	0	0	0	0 - 2

These suggestions and data are based on information we believe to be reliable. They are offered in good faith, but without guarantee, as conditions and methods of use are beyond our control. We recommend that the prospective user determine the suitability of our materials and suggestions before adopting them on a commercial scale.

LIGHT DIFFUSING ACRYLIC



OPTIX® LD Light Diffusing Acrylic Sheet

OPTIX LD light diffusing acrylic sheet provides superior diffusion properties that allow for greater sign design flexibility and slim profile channel (CAN) letters. Pin points and luminance fluctuations are eliminated while maintaining optimum light transmission. Available in a variety of popular sign colors, SG05 impact-modified and non-glare finishes. Custom color matching available. Supplied with papermask 2-sides unless noted below.

Item #	Description	Quantity
2447 LD WHITE		
1X97003A	.118" 51" x 100"	48/Mini Pallet
1X97001A	.177" 51" x 100"	28/Mini Pallet
1X97002A	.177" 75" x 100"	28/Mini Pallet
1X11250A	.177" 51" x 100" SG05 Polyfilm	28/Mini Pallet
1X11251A	.177" 75" x 100" SG05 Polyfilm	28/Mini Pallet
7328 LD WHITE		
1X48233A	.118" 51" x 100"	48/Mini Pallet
1X55052A	.118" 51" x 100" SG05 Polyfilm	48/Mini Pallet
2406 LD WHITE		
1X72156A	.118" 51" x 100" Polyfilm	28/Mini Pallet
1X72157A	.177" 51" x 100" Polyfilm	28/Mini Pallet
1X11414A	.177" 51" x 100" SG05 Polyfilm	28/Mini Pallet
1X11410A	.177" 75" x 100" SG05 Polyfilm	28/Mini Pallet
1X11416A	.177" 75" x 125" SG05 Polyfilm	28/Mini Pallet
2114 LD BLUE		
1X95005A	.118" 48" x 96"	48/Mini Pallet
1X04031A	.118" 48" x 96"	5 Pack
1X95002A	.177" 48" x 96"	28/Mini Pallet
1X04025A	.177" 48" x 96"	3 Pack
1X95010A	.177" 48" x 96" Polyfilm	28/Mini Pallet
2050 LD BLUE		
1X94003A	.118" 48" x 96"	48/Mini Pallet
1X94001A	.177" 48" x 96"	28/Mini Pallet
2157 LD RED		
1X04029A	.118" 48" x 96"	5 Pack
1X04030A	.177" 48" x 96"	3 Pack
LD NON-GLARE		
1X55051A	.118" 51" x 100" 7328 LD White	48/Mini Pallet
1X21591A	.177" 51" x 100" 7328 LD White	28/Mini Pallet
1X53149A	.118" 51" x 100" SG05 7328 LD White	48/Mini Pallet
1X53161A	.177" 51" x 100" SG05 7328 LD White	28/Mini Pallet



Item #	Description	Quantity
2793 LD RED		
1X04028A	.118" 48" x 96"	5 Pack
1X91002A	.177" 48" x 96"	28/Mini Pallet
1X91003A	.177" 48" x 96"	7/Case
1X91000A	.177" 75" x 100"	28/Mini Pallet
1X91001A	.177" 51" x 100"	28/Mini Pallet
1X10051A	.177" 72" x 96" SG05	28/Mini Pallet
1X52618A	.177" 75" x 100" SG05	28/Mini Pallet
1X91013A	.177" 48" x 96" Polyfilm	28/Mini Pallet
2283 LD RED		
1X92005A	.118" 48" x 96"	48/Mini Pallet
1X04026A	.118" 48" x 96"	5 Pack
1X92002A	.177" 48" x 96"	28/Mini Pallet
1X04027A	.177" 48" x 96"	3 Pack
1X92001A	.177" 51" x 100"	28/Mini Pallet
1X92000A	.177" 75" x 100"	28/Mini Pallet
1X92012A	.177" 51" x 100" SG05 Polyfilm	57/Mini Pallet
1X92013A	.177" 75" x 100" SG05 Polyfilm	28/Mini Pallet
1X92024A	.177" 48" x 96" Polyfilm	28/Mini Pallet
2037 LD YELLOW		
1X93005A	.118" 48" x 96"	48/Mini Pallet
1X04022A	.118" 48" x 96"	5 Pack
1X93002A	.177" 48" x 96"	28/Mini Pallet
1X04023A	.177" 48" x 96"	3 Pack
1X93001A	.177" 51" x 100"	28/Mini Pallet
1X93000A	.177" 75" x 100"	28/Mini Pallet

Run-to-Size Available

PLASKOLITE

COLORED SHEET



Colored Acrylic Flat Sheet

OPTIX® continuously processed colored acrylic sheet is offered in thicknesses of .060" to 1.0" and widths up to 100". This sheet is an excellent choice for skylights, displays, P.O.P., sunrooms, awnings and signage. Custom color matching available. Call for quotation on nonstock sizes, thicknesses and minimum quantities.

Colors Available:

- 2447 White
- 7328 White
- 2406 White
- 3015 White
- 2025 Black
- 2064 Gray
- 2074 Gray
- 2094 Gray
- 2514 Gray
- 2515 Gray
- 2538 Gray
- 2370 Bronze
- 2404 Bronze
- 2412 Bronze
- 2540 Bronze
- 2539 Bronze
- 3030 Green Edge
TemperElite

Light Transmission at .118"

Color	%
Clear	92%
2412	27%
2404	49%
2370	10%
2540	75%
2064	27%
2074	13%
2094	45%
2515	75%
2538	16%
2539	60%
2406*	68%
2447*	53%
7328*	32%
3015*	3%
2514	58%

* Light transmission changes with thickness.

Item #	Description	Quantity
1X49013A	.060" 48" x 96" 2025 Black Papermask	25/Skid
1X75209A	.060" 48" x 96" 2447 White Polyfilm	25/Skid
1X01237A	.060" 48" x 96" 2447 White Papermask	10 Pack
1X01238A	.060" 48" x 96" 7328 White Papermask	10 Pack
1X48140A	.093" 30" x 36" 2412 Bronze Polyfilm	10 Pack
1X52011A	.118" 48" x 96" 2025 Black Polyfilm	48/Skid
1X50013A	.118" 48" x 96" 2025 Black Papermask	5 Pack
1X04062A	.118" 48" x 96" 2025 Black Polyfilm	5 Pack
1X03133A	.118" 48" x 96" 2447 White Papermask	80/Skid
1X52153A	.118" 48" x 96" 2447 White Polyfilm	48/Skid
1X04064A	.118" 48" x 96" 2447 White Polyfilm	5 Pack
1X06899A	.118" 48" x 96" 3015 White Polyfilm	48/Skid
1X04063A	.118" 48" x 96" 3015 White Polyfilm	5 Pack
1X52135A	.118" 48" x 96" 7328 White Polyfilm	80/Skid
1X03714A	.118" 48" x 96" 7328 White Polyfilm	48/Skid
1X04065A	.118" 48" x 96" 7328 White Polyfilm	5 Pack
1X04066A	.118" 48" x 96" 2412 Bronze Polyfilm	5 Pack
1X04067A	.118" 48" x 96" 2404 Bronze Polyfilm	5 Pack
1X04069A	.118" 48" x 96" 2370 Bronze Polyfilm	5 Pack
1X04070A	.118" 48" x 96" 2074 Smoke Polyfilm	5 Pack
1X52023A	.118" 48" x 96" 2064 Smoke Polyfilm	48/Skid
1X04071A	.118" 48" x 96" 2064 Smoke Polyfilm	5 Pack
1X04068A	.118" 48" x 96" 3030 Green Polyfilm	5 Pack

COLORED SHEET



Colored Acrylic Flat Sheet

Item #	Description	Quantity
1X52232A	.118" 49" x 97" 2025 Black Polyfilm	80/Skid
1X87468A	.118" 49" x 97" 2447 White Polyfilm	80/Skid
1X03186A	.118" 48" x 120" 7328 White Polyfilm	25/Skid
1X52115A	.177" 48" x 96" 2025 Black Polyfilm	28/Skid
1X04048A	.177" 48" x 96" 2025 Black Polyfilm	3 Pack
1X03331A	.177" 48" x 96" 2447 White Polyfilm	28/Skid
1X31488A	.177" 49" x 97" 2025 Black Polyfilm	57/Skid
1X04050A	.177" 48" x 96" 2447 White Polyfilm	3 Pack
1X06894A	.177" 48" x 96" 3015 White Polyfilm	28/Skid
1X04049A	.177" 48" x 96" 3015 White Polyfilm	3 Pack
1X27240A	.177" 48" x 96" 7328 White Polyfilm	28/Skid
1X04047A	.177" 48" x 96" 7328 White Polyfilm	3 Pack
1X04051A	.177" 48" x 96" 2412 Bronze Polyfilm	3 Pack
1X04046A	.177" 48" x 96" 2074 Smoke Polyfilm	3 Pack
1X04052A	.177" 48" x 96" 2064 Smoke Polyfilm	3 Pack
1X35516A	.220" 48" x 96" 2025 Black Polyfilm	24/Skid
1X04054A	.220" 48" x 96" 2025 Black Polyfilm	2 Pack
1X35534A	.220" 48" x 96" 2447 White Polyfilm	24/Skid
1X04056A	.220" 48" x 96" 2447 White Polyfilm	2 Pack
1X06892A	.220" 48" x 96" 3015 White Polyfilm	24/Skid
1X04055A	.220" 48" x 96" 3015 White Polyfilm	2 Pack
1X35511A	.220" 48" x 96" 7328 White Polyfilm	24/Skid
1X04057A	.220" 48" x 96" 7328 White Polyfilm	2 Pack
1X04058A	.220" 48" x 96" 2412 Bronze Polyfilm	2 Pack
1X04059A	.220" 48" x 96" 2074 Smoke Polyfilm	2 Pack
1X04053A	.220" 48" x 96" 2064 Smoke Polyfilm	2 Pack
1X31489A	.236" 49" x 97" 2025 Black Polyfilm	45/Skid
1X60650A	.236" 49" x 97" 2447 White Polyfilm	45/Skid
1X06120A	.236" 49" x 97" 3015 White Polyfilm	45/Skid
1X72151A	.236" 49" x 97" 7328 White Polyfilm	45/Skid

Run-to-Size Available

PATTERNED SHEET



OPTIX® Frost/OPTIX® 95

OPTIX Frost has a frosting additive incorporated throughout the sheet, providing an elegant textured surface on both sides.

OPTIX 95 has a matte finish on one side that provides a decorative effect and reduces surface reflections.

Patterned sheet products can be easily fabricated using a variety of techniques. Contact Plaskolite for custom thickness and size information.



OPTIX® Frost Clear Acrylic Sheet

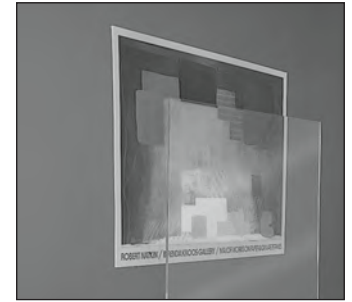
Item #	Description	Quantity
1AGL539A	.080" 24" x 48" LED Frost Papermask	Bulk 300
1AGL533A	.080" 51" x 100" LED Frost Papermask	Bulk 100
1X76205A	.118" 48" x 96" Frost Papermask	Bulk 50
1X76247A	.118" 48" x 96" Frost Papermask	5 Pack
1X76204A	.220" 48" x 96" Frost Papermask	Bulk 25
1X76246A	.220" 48" x 96" Frost Papermask	2 Pack

OPTIX® 95 Clear Acrylic Sheet with Matte Finish

Item #	Description	Quantity
P951001A	.118" 48" x 96" 95 Printed/Plain Papermask	Bulk 50
P952008A	.118" 51" x 100" 95 LED Printed/Plain Papermask	Bulk 50
P951003A	.220" 48" x 96" 95 Printed/Plain Papermask	Bulk 25

Run-to-Size Available

NON-GLARE ACRYLIC SHEET



Patterned Non-Glare Acrylic Flat Sheet

Plaskolite's OPTIX continuously processed non-glare acrylic is ideal for framing applications, signage, silkscreening and point of purchase displays.

Custom thicknesses and non-stock sizes offered. Call for quotation and delivery information.

OPTIX® Non-Glare Heavy Matte

Item #	Description	Quantity
1X4896UA	.060" 48" x 96" Non-Glare Adhesive/polyfilm	5 Pack
1X48978A	.060" 48" x 96" Non-Glare Adhesive/polyfilm	Bulk 125
1X48973P	.060" 48" x 96" Non-Glare Papermask, 2 sides	5 Pack
1X48973A	.060" 48" x 96" Non-Glare Papermask, 2 sides	Bulk 125
1X48947A	.080" 48" x 96" Non-Glare Adhesive/polyfilm	5 Pack
1X4896PA	.080" 48" x 96" Non-Glare Adhesive/polyfilm	Bulk 100
1X4896QA	.125" 48" x 96" Non-Glare Adhesive/polyfilm	5 Pack
1X4896RA	.125" 48" x 96" Non-Glare Adhesive/polyfilm	Bulk 50
1X48989A	.125" 48" x 96" Non-Glare Papermask, 2 sides	5 Pack
1X48986A	.125" 48" x 96" Non-Glare Papermask, 2 sides	Bulk 50
1X49137A	.177" 48" x 96" Non-Glare Papermask, 2 sides	3 Pack
1X49135A	.220" 48" x 96" Non-Glare TG Film/polyfilm	2 Pack
1X49126A	.220" 48" x 96" Non-Glare Papermask, 2 sides	2 Pack

OPTIX® Non-Glare Light Matte

Item #	Description	Quantity
625017-1	.080" 48" x 96" Non-Glare TG Film/paper replacement film	Bulk 100
625203-1	.080" 48" x 96" Non-Glare Papermask, 2 sides	Bulk 100
625007-1	.100" 48" x 96" Non-Glare Adhesive polyfilm	Bulk 100
625015-1	.118" 48" x 96" Non-Glare TG Film/paper replacement film	Bulk 80
625303-1	.125" 48" x 96" Non-Glare Papermask, 2 sides	Bulk 80
625008-1	.125" 48" x 96" Non-Glare Adhesive polyfilm	Bulk 80
11-0060213	.125" 60" x 96" Non-Glare Adhesive/Polyfilm	Bulk 70

OPTIX® 99 Ultra-light Matte

Item #	Description	Quantity
1X53879A	.060" 48" x 96" Ultra-light matte, papermask	Bulk 125
1X53880A	.080" 48" x 96" Ultra-light matte, papermask	Bulk 100
1X53881A	.125" 48" x 96" Ultra-light matte, papermask	Bulk 50
1X53882A	.125" 48" x 96" Ultra-light matte, polyfilm	Bulk 50

Run-to-Size Available

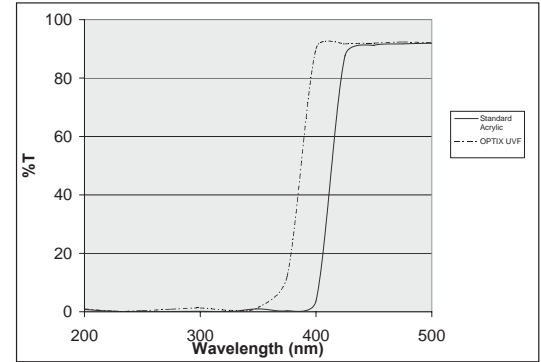
FRAMING SHEET



Picture Frame Glazing Sheet

OPTIX® Frame Grade Clear and UVF acrylic sheet are camera inspected throughout the manufacturing processes to ensure the highest quality.

- OPTIX Frame Grade is available in a thickness range from .060" to .118".
- Available in .098" and .118" thickness, OPTIX Frame Grade UVF provides the highest protection from UV light, absorbing 98% of the damaging rays.
- UVF non-glare acrylic available.



OPTIX® Frame Grade Clear Acrylic

Item #	Description	Sq. Ft.	Pack Qty.
FG00023A	.060" 48" x 96" Polyfilm	32	Bulk 180
FG00025A	.090" 48" x 96" Polyfilm	32	Bulk 120
FG00027A	.118" 48" x 96" Polyfilm	32	Bulk 96
FG00028A	.118" 48" x 96" Papermask	32	Bulk 96

OPTIX Frame® Grade UVF Acrylic with Printed Papermask

Item #	Description	Sq. Ft.	Pack Qty.
1UVF040A	.098" 48" x 96"	32	Bulk 56
1UVF 041A	.118" 48" x 96"	32	Bulk 48

OPTIX® Clear and Non-glare acrylic sheet are stocked in a variety of popular picture frame sizes.

- Superior impact resistance and half the weight of glass.
- OPTIX non-glare acrylic reduces glare and reflection from any viewing angle.

.040" (1.0mm) Clear Acrylic with Polyfilm

Item #	Size	Sq. Ft.	Qty. Per Pack
1AU0920A	8.5" x 11"	.64	Bulk 77
1AU0921A	11" x 14"	1.06	47 Pack
1AU0924A	16" x 20"	2.22	23 Pack
1AU0925A	22" x 28"	4.27	12 Pack
1AU0926A	24" x 36"	6.00	8 Pack
1AG8458A	49" x 100.5"	34.17	Bulk 120

.050" (1.2mm) Non-Glare Acrylic with Printed Adhesive Film

Item #	Size	Sq. Ft.	Qty. Per Pack
1X60068A	8" x 10"	.55	Bulk 90
1X09241A	8" x 10"	.55	25 Pack
1X09242A	11" x 14"	1.06	25 Pack
1X60069A	11" x 14"	1.06	47 Pack
1X09244A	12" x 16"	1.33	25 Pack

Run-to-Size Available

PATTERNED SHEET



Patterned Acrylic Sheet

Plaskolite offers patterned acrylic sheet for applications such as shower doors, displays, indoor/outdoor furniture, point of purchase and home furnishing products.

Custom and non-stock thicknesses, colors, patterns and sizes available.
Call for quotation and delivery information.



Adobe



P-32

Patterned Acrylic Sheet

Item #	Description	Quantity
Adobe (Double side pattern) 635000-1	51" x 100" Polyfilm .220"	45/Skid
P-32 Worthington/Haircell P324896A	48.5" x 96.5" Polyfilm .220"	50/Skid

Maximum width offered 51".

Run-to-Size Available

COPOLYESTER

VIVAK®

VIVAK® PETG

VIVAK is transparent copolyester that offers a unique balance of physical properties and ease of fabrication.

VIVAK is the ideal material for applications that require deep draws, complex die cuts and precise molded-in details without sacrificing structural integrity. It is produced with a resin that complies with FDA requirements for food contact, and can be easily decorated by painting, silk screening or hot stamping. VIVAK is used in a variety of industries including POP/display and store fixtures.



Contact Plaskolite for minimum production requirements for sizes, colors and thicknesses.

Item #	Description	Quantity
PE20025A	.020" 48" x 96" Clear w/ Joggable Film	240/Skid
PE20027A	.030" 48" x 96" Clear w/ Joggable Film	170/Skid
PE20005A	.040" 48" x 96" Clear w/ Joggable Film	120/Skid
PE20006A	.060" 48" x 96" Clear w/ Joggable Film	160/Skid
PE50008A	.060" 48" x 96" Satin w/ Clear Hi-Tak/ Joggable Film	120/Skid
PE50031A	.060" 48" x 96" Satin w/ Clear Hi Tak/ Joggable Film	10 Pk
PE22000A	.060" 60" x 96" Clear w/ Joggable Film	64/Skid
PE20007A	.080" 48" x 96" Clear w/ Joggable Film	120/Skid
PE20009A	.100" 48" x 96" Clear w/ Joggable Film	100/Skid
PE20010A	.118" 48" x 96" Clear w/ Joggable Film	80/Skid
PE22002A	.118" 60" x 96" Clear w/ Joggable Film	32/Skid
PE20011A	.177" 48" x 96" Clear w/ Joggable Film	54/Skid
PE22003A	.177" 60" x 96" Clear w/ Joggable Film	22/Skid
PE20019A	.220" 48" x 96" Clear w/ Joggable Film	45/Skid
PE20012A	.236" 48" x 96" Clear w/ Joggable Film	20/Skid
PE20013A	.375" 48" x 96" Clear w/ Joggable Film	13/Skid
PE21092A	.500" 48" x 96" Clear w/ MVM White Film	15/Skid
PE20033A	.020" 48" x 72" Clear w/ Joggable Film	240/Skid
PE20034A	.030" 48" x 72" Clear w/ Joggable Film	170/Skid
PE20035A	.040" 48" x 72" Clear w/ Joggable Film	120/Skid
PE20039A	.060" 48" x 72" Clear w/ Joggable Film	160/Skid

ABS SHEET

ABS Sheet

Utility Grade ABS (Acrylonitrile Butadiene Styrene) sheet is produced with only the highest quality recycled product and has a 100% virgin cap layer. Produced with a Haircell pattern on one side, and smooth finish on the reverse, ABS has excellent impact strength and formability.

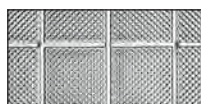
White and black ABS sheets are stocked in 48" x 96" sheet size, with custom colors and sizes available.



Item #	Description	Sq. Ft.	Quantity
ABS2103C	White - Smooth/Haircell .060" 48" x 96"	32	125 Bulk
ABS9900A	Black - Smooth/Haircell .060" 48" x 96"	32	125 Bulk
ABS2104C	White - Smooth/Haircell .093" 48" x 96"	32	75 Bulk
ABS9901A	Black - Smooth/Haircell .093" 48" x 96"	32	75 Bulk
ABS2105C	White - Smooth/Haircell .118" 48" x 96"	32	60 Bulk
ABS9902A	Black - Smooth/Haircell .118" 48" x 96"	32	60 Bulk
ABS2106C	White - Smooth/Haircell .177" 48" x 96"	32	40 Bulk
ABS9903A	Black - Smooth/Haircell .177" 48" x 96"	32	40 Bulk
ABS2107C	White - Smooth/Haircell .236" 48" x 96"	32	30 Bulk
ABS9904A	Black - Smooth/Haircell .236" 48" x 96"	32	30 Bulk

LIGHTING SHEET

Lighting Sheet



Prisma-Square



Prismatic clear & white



Cracked Ice clear & white



Egg Crate Louver white & metallic

OPTIX Acrylic Lighting Panels

Item #	Description	Sq. Ft.	Qty.
1A00702A	Prisma Square Clear 23.75" x 47.75"	7.87	20 Pack
1A20083A	Prismatic Clear 23.75" x 47.75"	7.87	20 Pack
1A20084A	Prismatic White 23.75" x 47.75"	7.87	20 Pack
1A30020A	Prismatic Clear 23.75" x 23.75"	3.91	25 Pack
1420083A	Cracked Ice Clear 23.75" x 47.75"	7.87	20 Pack
1420084A	Cracked Ice White 23.75" x 47.75"	7.87	20 Pack
1405060A	Cracked Ice Clear 36" x 60"	15	10 Pack
1405061A	Cracked Ice White 36" x 60"	15	10 Pack
1435020A	Cracked Ice Clear 23.75" x 23.75"	3.91	25 Pack

Micro-Prism Acrylic Lighting Panels

Item #	Description	Sq. Ft.	Qty.
1A90000A	Micro Prism White Frost Glaze 23.75" x 47.75"	7.87	20 Pack
1A90001A	Micro Prism Clear Frost Glaze 23.75" x 47.75"	7.87	20 Pack
671003-1-25	Micro Prism Clear 23.75" x 47.75"	7.87	25 Pack

Styrene Louvers

Item #	Description	Sq. Ft.	Qty.
1199232A	Egg Crate White 1/2" x 1/2" x 3/8", 23.75" x 47.75"	7.87	5 Pack
1199241A	Egg Crate White 1/2" x 1/2" x 1/2", 23.75" x 47.75"	7.87	10 Pack
1199238A	Egg Crate Metallic 1/2" x 1/2" x 3/8", 23.75" x 47.75"	7.87	5 Pack
1199233A	Egg Crate White 1/2" x 1/2" x 3/8", 23.75" x 47.75"	7.87	15 Pack
1199234A	Egg Crate Metallic 1/2" x 1/2" x 3/8", 23.75" x 47.75"	7.87	15 Pack

DURALENS®

Premium Grade Acrylic Lighting Panels

Item #	Description	Sq. Ft.	Qty.
1430083A *	Cracked Ice Clear 23.75" x 47.75"	7.87	20 Pack
1430084A *	Cracked Ice White 23.75" x 47.75"	7.87	20 Pack
1A30084A *	PL21 Prismatic White 23.75" x 47.75"	7.87	20 Pack
1A30083A *	Prismatic Clear 23.75" x 47.75"	7.87	20 Pack
1A00703A *	Prisma Square Clear 23.75" x 47.75"	7.87	20 Pack

The above DURALENS lighting panels are covered by a 10-year limited replacement warranty against breakage.

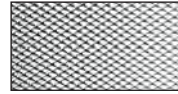
Visit www.plaskolite.com/duralens_warranty for details.

* Denotes Consumer/Retail Item

LIGHTING SHEET

Lighting Sheet

Pattern 12 (PL-21) Prismatic patterned lighting sheet is available in clear, white, Frost and silvertint.



Pattern 12 (PL21)
Prismatic



Acrylic Prismatic Lighting Sheet 3/16" Square Base Female Conical Pattern

Item #	Description	Sq. Ft.	Qty.
225852-1	Pattern 12 (PL-21) Prismatic Clear .095" 22.50" x 46.50"	7.27	20 Pack
225196-1	Pattern 12 (PL-21) Prismatic Clear .095" 22.50" x 46.50"	7.27	300 Bulk
225181-1	Pattern 12 (PL-21) Prismatic Clear .095" 23.75" x 47.75"	7.87	300 Bulk
225114-1	Pattern 12 (PL-21) Prismatic Clear .095" 23.75" x 47.75"	7.87	20 Pack
225604-1	Pattern 12 (PL-21) Prismatic Frost .095" 23.75" x 47.75"	7.87	300 Bulk
225433-1	Pattern 12 (PL-21) Prismatic Clear .095" 50" x 51"	17.72	250 Bulk
225686-1	Pattern 12 (PL-21) Prismatic Clear .095" 50" x 100"	34.75	100 Bulk
225218-1	Pattern 12 (PL-21) Prismatic Clear .110" 23.75" x 47.75"	7.87	300 Bulk
225252-1	Pattern 12 (PL-21) Prismatic Clear .110" 23.75" x 47.75"	7.87	20 Pack
225122-1	Pattern 12 (PL-21) Prismatic Clear .110" 22.50" x 46.50"	7.27	20 Pack
225047-1	Pattern 12 (PL-21) Prismatic Clear .110" 50" x 51"	17.72	300 Bulk
225687-1	Pattern 12 (PL-21) Prismatic Clear .110" 50" x 100"	34.75	100 Bulk
225342-1	Pattern 12 (PL-21) Prismatic Clear .125" 23.75" x 47.75"	7.87	250 Bulk
225391-1	Pattern 12 (PL-21) Prismatic Clear .125" 23.75" x 47.75"	7.87	25 Pack
1A2347PA	Pattern 12 (PL-21) Prismatic Clear .125" 23.75" x 47.75"	7.87	15 Pack
225734-1	Pattern 12 (PL-21) Prismatic Clear .125" 22.50" x 46.50"	7.27	25 Pack
225354-1	Pattern 12 (PL-21) Prismatic Clear .125" 50" x 51"	17.72	250 Bulk
1A48484A	Pattern 12 (PL-21) Prismatic Clear .125" 48" x 96"	32	50 Bulk
1A48485A	Pattern 12 (PL-21) Prismatic Clear .125" 48" x 96"	32	5 Pack
225597-1	Pattern 12 (PL-21) Prismatic Frost .125" 23.75" x 47.75"	7.87	250 Bulk
225688-1	Pattern 12 (PL-21) Prismatic Clear .125" 50" x 100"	34.75	80 Bulk
225231-1	Pattern 12 (PL-21) Prismatic White .125" 50" x 100"	34.75	80 Bulk
225375-1	Pattern 12 (PL-21) Prismatic Silvertint .125" 23.75" x 47.75"	7.87	25 Pack
225396-1	Pattern 12 (PL-21) Prismatic Clear - .125" Min. 23.75" x 47.75"	7.87	200 Bulk
227001-1	Pattern 12 (PL-21) Prismatic Clear - .156" 23.75" x 47.75"	7.87	200 Bulk
225412-1	Pattern 12 (PL-21) Prismatic Clear - .187" 23.75" x 47.75"	7.87	150 Bulk
225430-1	Pattern 12 (PL-21) Prismatic Clear - .187" 50" x 51"	17.72	150 Bulk

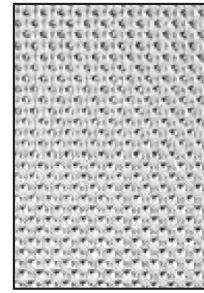
KSH® LIGHTING LENS SERIES

KSH® Lighting Lens Series

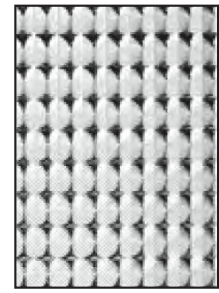
The KSH series of light controlling products from Plaskolite were designed to meet the requirements of today's sophisticated work environments. Each of the KSH lenses was designed to control and direct fluorescent and HID lighting, based on specific industry requirements, while maintaining a high level of visual comfort. In addition to the stock items, many lenses are available cut to your specifications. Call for details.

KSH Lighting Panel Series Color & Pattern Descriptions:

- UVALITE® - a matte finish that provides additional ultraviolet protection.
- UVALITE® Plus - a smooth finish that provides optimum ultraviolet protection.
- RF - Radio Frequency suppression to prevent interference in computing and testing equipment.
- ACRI-TUF® - 10-20 times stronger than standard acrylic panels.
- Silvertint - offers low brightness, increasing visual comfort.
- LED - provides optimum light transmission while eliminating undesired pinpoints of light.



KSH-12



KSH-15

KSH® -12

An acrylic prismatic panel with a 3/16" square base female conical prism placed on a 45° axis. Straight sided prisms eliminate glare with increased lamp obscuration.

Item #	Description	Sq. Ft.	Qty.
125215-1	KSH 12 Prismatic Clear .125" 23.75" x 47.75"	7.87	250 Bulk
125000-1	KSH 12 Prismatic Clear RF .125" 23.75" x 47.75"	7.87	250 Bulk
125012-1	KSH 12 Prismatic Uvalite .125" 23.75" x 47.75"	7.87	250 Bulk
125278-1	KSH 12 Prismatic .125" Min. 23.75" x 47.75"	7.87	200 Bulk
128145-1	KSH 12 Prismatic ACRI-TUF .140" 23.75" x 47.75"	7.87	200 Bulk
128148-1	KSH 12 Prismatic ACRI-TUF .187" 23.75" x 47.75"	7.87	150 Bulk

KSH® -15

An acrylic prismatic panel with a bold 3/8" square base female conical prism placed parallel and perpendicular to the length and width of the panel.

The KSH-15 pattern panel provides:

- Excellent efficiency and direct glare control
- Suitable for use in large areas without objectionable sag

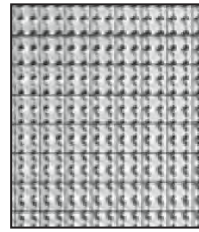
Item #	Description	Sq. Ft.	Qty.
155100-1	KSH 15 Prismatic Clear .200" 23.75" x 47.75"	7.87	150 Bulk
155115-1	KSH 15 Prismatic Clear .200" 50" x 51"	17.72	150 Bulk
155112-1	KSH 15 Prismatic Clear .200" 48" x 96"	32.12	50 Pack

KSH® LIGHTING LENS SERIES

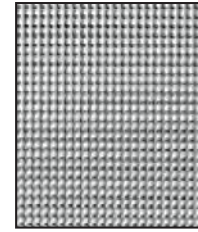
KSH® Lighting Lens Series

KSH®-19

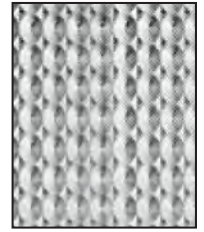
An acrylic prismatic panel with a 3/16" square base male conical prism placed parallel and perpendicular to the length and width of the panel. The Industry standard used to control high angled brightness and improve visual comfort.



KSH-19



KSH-20



KSH-23

Item #	Description	Sq. Ft.	Qty.
195121-1	KSH 19 Prismatic Clear .156" 23.75" x 47.75"	7.87	20 Pack
195000-1	KSH 19 Prismatic Clear RF .156" 23.75" x 47.75"	7.87	30 Pack
195130-1	KSH 19 Prismatic Clear .156" 50" x 51"	17.72	200 Bulk
195136-1	KSH 19 Prismatic Silvertint .156" 23.75" x 47.75"	7.87	20 Pack
195242-1	KSH 19 Prismatic Clear .187" 23.75" x 47.75"	7.87	15 Pack
196032-1	KSH 19 Prismatic Frost .156" 23.75" x 47.75"	7.87	200 Bulk

KSH®-20

An acrylic prismatic panel with a 1/8" square base male conical prism placed parallel and perpendicular to the length and width of the panel.

The KSH-20 panel provides:

- Excellent brightness control
- Soft surface appearance

Item #	Description	Sq. Ft.	Qty.
205100-1	KSH 20 Prismatic Clear .140" 23.75" x 47.75"	7.87	200 Bulk

KSH®-23

A clear acrylic lens with a unique combination of bold, shallow optics, providing excellent retention of the lens' surface texture and uniform surface appearance in fluorescent troffers. The truss-shaped prism design provides an economical solution to sagging lens problems.

The KSH-23 panel provides:

- High level of efficiency
- Eliminates lamp images
- Eliminates sagging

Item #	Description	Sq. Ft.	Qty.
235103-1	KSH 23 Clear .100" 23.75" x 47.75"	7.87	300 Bulk
235133-1	KSH 23 Clear .100" 50" x 51"	17.72	300 Bulk
235250-1	KSH 23 Frost .100" 23.75 x 47.75"	7.87	300 Bulk

KSH® LIGHTING LENS SERIES

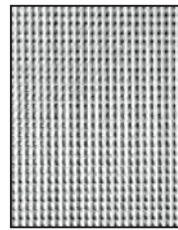
KSH® Lighting Lens Series

KSH®-32 CFL (Computer Friendly Lens)

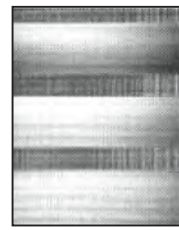
An acrylic lens that has a raised prismatic pattern of male cones running parallel and perpendicular to the length & width of the lens.

The KSH-32 panel provides:

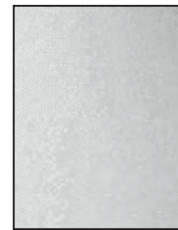
- Reduction in computer screen glare
- Good efficiency
- Excellent luminance control and lamp obscuration



KSH-32 CFL



KSH-34 HSS



KSH-Overlay

Item #	Description	Sq. Ft.	Qty.
Contact Plaskolite for availability.			

KSH®-34 HSS (Hospital Surgical Suite)

The unique banded optic design of the acrylic lens requires a specific placement of the lamps in the luminaire. The lamps are arranged in 3 pairs of two lamps each, and are located over the male cone prism bands. To maximize the light output, the lamps are asymmetric about the luminaire centerline.

Specifically designed for supplemental surgical suite lighting, the scientifically placed male prismatic and linear lens elements provide an asymmetric distribution. This distribution directs maximum candle power to the surgical site as with typical luminaire layouts, while generously illuminating the surrounding areas.

Item #	Description	Sq. Ft.	Qty.
236003-1	KSH 34 HSS Clear RF .150" 22.75" x 47.75"	7.54	20 Pack

KSH® Overlay

A high transmission acrylic panel used as an overlay to diffuse lamp images and provide more uniform surface brightness.

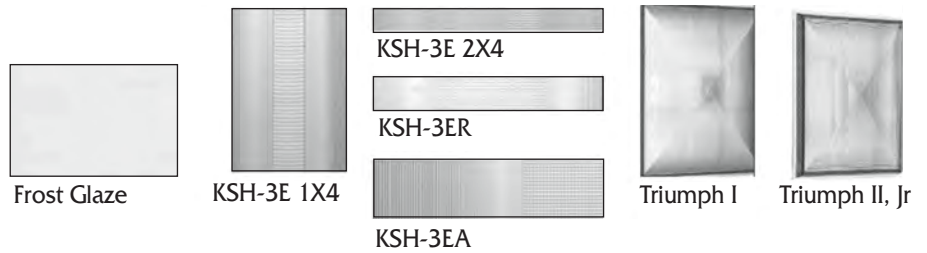
The KSH Overlay panel provides:

- Total lamp obscuration
- Reduced veiling reflections and reflected glare

Item #	Description	Sq. Ft.	Qty.
405118-1	Overlay Matte Clear .040" 23.75" x 47.75"	7.87	35 Pack
405100-1	Overlay Matte White .040" 23.75" x 47.75"	7.87	35 Pack
405112-1	Overlay Matte White .040" 50" x 51"	17.72	750 Bulk
315175-1	Clear Uvalite Plus .060" 24" x 48"	8	250 Bulk
405080-1	Overlay Matte White LED .040" 23.75 x 47.75"	7.87	750 Bulk

KSH® LIGHTING LENS SERIES

KSH® Lighting Lens Series



KSH® Frost Glaze

A mechanically textured white acrylic panel that has a heavy pebbled surface on one (down), and smooth on the other. The KSH White Frost Glaze Panel provides:

- Good light transmission and lamp obscuration

Item #	Description	Sq. Ft.	Qty.
535181-1	KSH White Frost Glaze .080" 23.75" x 47.75"	7.87	300 Bulk
535186-1	KSH White Frost Glaze .080" 50" x 51"	17.72	300 Bulk
535005-1	KSH White Frost Glaze .080" 50" x 110"	38.21	100 Bulk
535191-1	KSH White Frost Glaze .125" 23.75" x 47.75"	7.87	250 Bulk
535194-1	KSH White Frost Glaze .125" 50" x 51"	17.72	250 Bulk
535197-1	KSH White Frost Glaze .187" 50" x 51"	17.72	150 Bulk

KSH®-3E / 3ER / 3EA

The KSH 3E Series of lighting lenses provide significant energy savings by reducing the number of lamps per fixture and by increasing the spacing between fixtures.

- KSH 3E 1X 4 - a computer designed lens for a one lamp fluorescent luminaire for energy saving lighting, with its widespread bi-symmetrical candlepower distribution making it ideal for coffer systems.
- KSH 3E 2X4 has a computer perfected blend of four optical bands that distribute candlepower to minimize ceiling reflections and increase task visibility.
- KSH 3ER - a scientific computer blend of 3 optical bands of female, elevating, and depressing prisms, designed for retrofitting a 4-lamp luminaire system to a 2-lamp. This conversion will save in operating costs, while maintaining 55-70% of the original footcandle levels.
- KSH 3EA - computer designed lens for one lamp fluorescent luminaire.

Item #	Description	Sq. Ft.	Qty.
Contact Plaskolite for availability.			

TRIUMPH®

The Triumph series of lighting lenses are designed specifically for HID lighting.

- TRIUMPH I - a computer perfected lens that squares the conventional circular light spread resulting in a need for fewer fixtures and a reduction in energy costs.
- TRIUMPH II (JR) - provides an optical control device for low-wattage HID. The patented optics accept horizontal or vertical lamp placement and provide widespread spacing capabilities.

Item #	Description	Sq. Ft.	Qty.
735000-1	Triumph I Clear Acrylic 22.25" x 22.25"	3.7	10 Pack
739000-1	Triumph I Clear Polycarbonate 22.25" x 22.25"	3.7	10 Pack
735003-1	Triumph II Clear Acrylic 12" x 12"	1	20 Pack
739003-1	Triumph II Clear Polycarbonate 12" x 12"	1	20 Pack

EXTRUDED MIRROR ACRYLIC



FABBACK® Extruded Clear Acrylic Mirror Sheet

FABBACK mirrored acrylic sheet is made with OPTIX continuously processed acrylic sheet. Mirrorizing is done by the process of vacuum metallizing with aluminum being the primary metal evaporated. FABBACK mirror acrylic sheet features the industry's toughest protective back-coating. The durability of this sheet makes it virtually scratch-resistant during fabrication.

Standard sheet is 48" x 96" but also non-stock sizes available in 36" x 60" to 80" x 120". Thicknesses range from .060"-.236". Please call for custom and non-stock sizes, thicknesses, availability, and delivery information.



Clear Acrylic Mirror

Item #	Size	Qty.	Skid Qty.
.060" (1.5mm)			
C400011M	48" x 96" Film 1 side	Bulk	120
.080" (2.0mm)			
C500001M	48" x 96" Film 1 side	Bulk	100
.118" (3.0mm)			
C100047M	48" x 96" Film 1 side	Bulk	80
C100048M	48" x 96" Film 1 side	Bulk	40
C100079M	48" x 96" Film 1 side/Papermask paint side	Bulk	80
CP10076M	23 3/4" x 47 3/4" Film 1 side (mirror)	Case	5
C100055M	48" x 96" Papermask 1 side (mirror)	Bulk	80
C100049M	48" x 96" Papermask 1 side (mirror)	Bulk	40
C100077M	48" x 96" Papermask 2 sides	Bulk	80
C100073M	48" x 96" Film 1 side	Case	15
C100816M	48" x 96.5" 3 mil laser poly	Bulk	80
C100828M	48" x 96.5" 3 mil laser poly/pressure sensitive	Bulk	80
C100075M	60" x 96" Film 1 side	Bulk	80
C100430M	72" x 96" Film 1 side	Bulk	30

All mirrored acrylic sheet is produced with a 1" overage on length and width.

Run-to-Size Available

EXTRUDED MIRROR ACRYLIC



FABBACK® Extruded Clear Acrylic Mirror Sheet

Item #	Size	Qty.	Skid Qty.
.220" (5.6mm)			
C800005M	48" x 96" Film 1 side	Bulk	25
C800009M	48" x 96" Film 1 side	Bulk	50
C800007M	48" x 96" Film 1 side	Case	12
C800020M	48" x 96" Papermask 2 sides	Bulk	50
.236" (6.0mm)			
C200021M	48" x 96" Film 1 side	Bulk	40
C200035M	48" x 96" Film 1 side	Case	10

Protective Coverings

- 2 mil Polyfilm, 3 mil laser cuttable film or papermask.

Protective Backings

- Pressure sensitive backing, papermask.
- See the Protective Coverings & Backings for Mirror Sheet section of this guide for more information.

Services

- Router, laser, saw-cutting and die-cutting services offered. Call for quotation on availability and delivery information.
- See FABBACK mirror fabrication manual for specific handling and working instructions for mirror acrylic sheet.

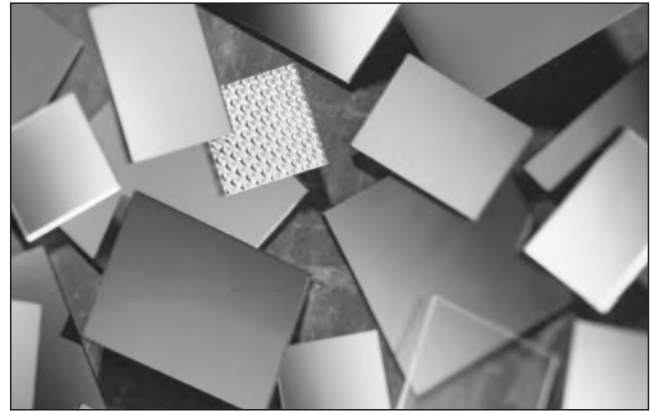
Run-to-Size Available

EXTRUDED MIRROR ACRYLIC COLOR



FABBACK® Extruded Colored Acrylic Mirror Sheet

Plaskolite stocks FABBACK mirrored acrylic sheet in many brilliant colors in .118" (3.0mm) thickness. All mirror acrylic colored sheet is covered with a 3-mil laser-cuttable film. Different maskings available. 1" overage on our standard sheet is given for maximum yield in the laser cutting industry.



Please call for custom colors and non-stock sizes.

Item #	Thickness	Size	Color	Case Quantity	Skid Quantity
C100518M	.118"	48" x 96.5"	1000 Blue	15	80
C100526M	.118"	48" x 96.5"	2069 Blue	15	80
C100941M	.118"	48" x 96.5"	2424 Blue	15	80
C100522M	.118"	48" x 96.5"	1020 Purple	15	80
C100431M	.118"	48" x 96.5"	1050 Gray	15	80
C100083M	.118"	48" x 96.5"	2064 Gray	15	80
C100515M	.118"	48" x 96.5"	1119 Orange	15	80
C100938M	.118"	48" x 96.5"	1300 Gold	15	80
C100494M	.118"	48" x 96.5"	1310 Red	15	80
C100529M	.118"	48" x 96.5"	1400 Red	15	80
C100527M	.118"	48" x 96.5"	2423 Red	15	80
C100046M	.118"	48" x 96.5"	2404 Bronze	15	80
C100516M	.118"	48" x 96.5"	1600 Bronze	15	80
C100947M	.118"	48" x 96.5"	4674 Green	15	80
C100525M	.118"	48" x 96.5"	2414 Green	15	80
C100521M	.118"	48" x 96.5"	1450 Pink	15	80
C100495M	.118"	48" x 96.5"	2120 Teal	15	80
C100514M	.118"	48" x 96.5"	2208 Yellow	15	80
C100523M	.118"	48" x 96.5"	2422 Amber	15	80

.236" thickness available in 2404 Bronze and 2064 Gray.

Run-to-Size Available

MIRROR SHEET

Marine Grade Acrylic Mirror Sheet

Marine Grade is a high quality, premium grade of FABBACK® acrylic mirror sheet. Double inspected throughout the manufacturing process to ensure maximum quality. Marine Grade is used in boat/yacht interior applications.

.118" and .236" thicknesses available in a 48" x 96" sheet size with a protective papermasking on 2 sides. Abrasion resistant coating, custom sizes, thickness and alternative protective masking options available.



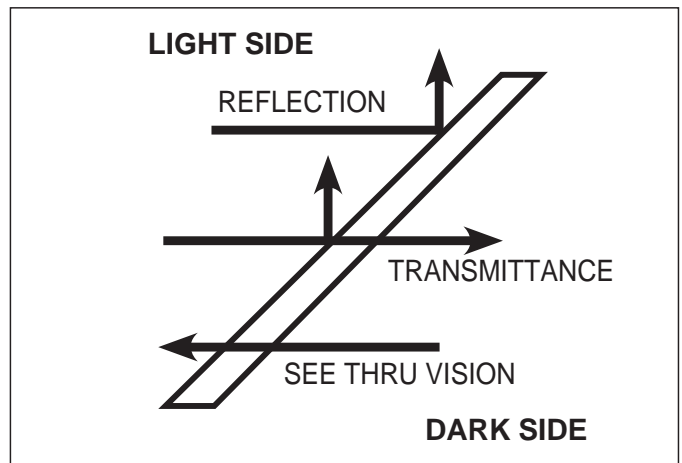
Aircraft Grade Polycarbonate Mirror Sheet

Aircraft Grade polycarbonate mirror offers maximum quality and abrasion resistance. Specifically engineered for demanding aircraft applications, this highly reflective, lightweight material is shatter resistant and meets FAR 25.853 (a) flame retardant requirements. 48" x 96" sheet size is available in clear, bronzes and gray tints, in a thickness range from .080" to .118". Custom thickness and size options available.



See-Thru Mirror Sheet

"See-thru" or "Two-Way" mirror has a semi-transparent aluminum film deposited on the substrate that allows a percentage of incident light to pass through, while reflecting the remainder. From the illuminated side, it's a mirror; from the darkened side it's transparent. This material is used in monitoring/surveillance, infinity lighting, multiple imaging and advertising applications. .118" and .236" thicknesses available in a 48" x 96" sheet size. See-Thru mirror is available in acrylic or polycarbonate with custom color, size and thickness options available.



See-Thru Acrylic Mirror

Item #	Description	Quantity
C100071M	48" x 96" film .118" See-Thru Acrylic Mirror	80/pallet
C200032M	48" x 96" film .236" See-Thru Acrylic Mirror	40/pallet

Run-to-Size Available

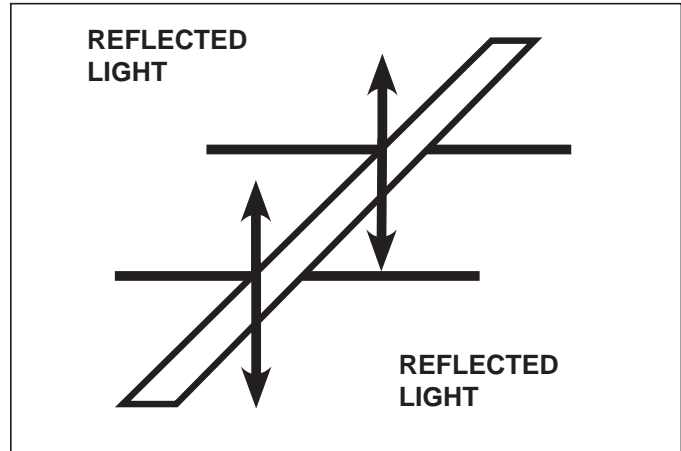
MIRROR SHEET

First Surface (2-Sided) Mirror Sheet

“First Surface” (two-sided mirror) consists of an opaque film of aluminum, protected by a tough clear coating. Light incident from either direction is reflected.

“First Surface” is often used in retail display and special lighting. The dual surface reflection property is ideal for those applications where the back side of the mirror will remain exposed, or where a reflection in both directions is desired. It is available in acrylic or polycarbonate and with a color option. Thicknesses of .118" and .236" offered.

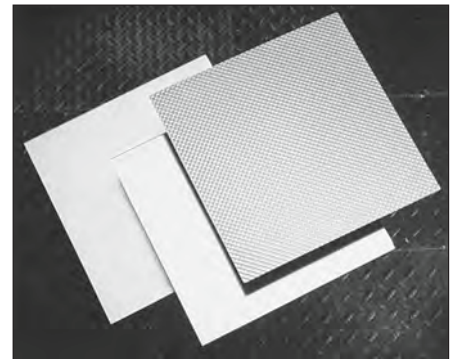
For custom and non-stock sizes and thicknesses, call for availability and delivery information.



Item #	Description	Quantity
C100069M	48" x 96" Film .118" First Surface Mirror	80/pallet

Textured Acrylic Mirror Sheet

Interesting textures for special design needs. Available in .125" thickness in 48" x 96" sheet. For custom and non-stock sizes and thicknesses, call for availability.



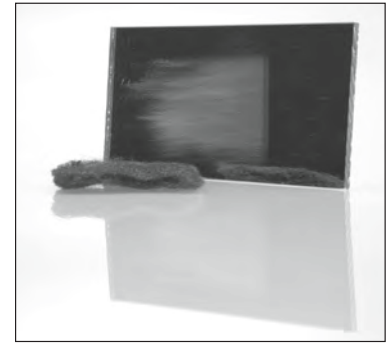
Item #	Pattern	Size	Case Quantity	Skid Quantity
C100683M	Non-Glare	48" x 96"	15	80
C100607M	PL-21 Prismatic	48" x 96"	15	80

Run-to-Size Available

ARMADILLO COATING

ARmadillo Scratch-Resistant Coating

Plaskolite's "ARmadillo" scratch-resistant coating is available on mirror acrylic, non-mirror acrylic, polycarbonate; and in many colors and thicknesses. Ideal for applications that require abrasion, stain and solvent resistance, such as, retail displays, table tops, door panels and other applications that are exposed to high traffic. "ARmadillo" can also be written upon with erasable markers, making it useful in scheduling boards and restaurant menu applications. The coating is available on one or two sides. Please call for availability and delivery information on custom and non-stock items.



Abrasion Resistance Test

Test Method	Change in Haze/ASTM D-1003	
	Uncoated Polycarbonate	ARmadillo
Steel Wool Rotary Test 12 and 15 psi 5 revolutions	25%	less than 1%
Taber Abrasion 500 grams - 100 revolutions	37%	less than 5%
Eraser Abrasion	N.A.	0 rating

Chemical Resistance

Test Method	Results
Soft Cloth Soaked with: 1) Ammonium Hydroxide (100%) 2) Hydrochloric Acid 3) Acetone 4) Kerosene 5) Toluene Vigorous rub for 2 minutes	0.0% change in haze

Scratch Resistant Acrylic Sheet

Item #	Description
C100060M	*AR-1 48" x 96" .118" Acrylic Mirror Paper 1 side
C100061M	*AR-1 48" x 96" .118" Acrylic Non-Mirror Paper 1 side
C100063M	**AR-2 48" x 96" .118" Acrylic Non-Mirror Paper 2 sides

- * AR-1 - Coated one side
- ** AR-2 - Coated two sides

Run-to-Size Available

PETG MIRROR SHEET

PETG Mirror Sheet

PETG Mirror offers versatile fabrication properties with good impact strength, good design flexibility and speed of fabrication.

PETG Mirror is available in .040"-.118", in 48" x 96" sheet. The thinner gauge sheet is ideal for the fabrication of children's toys, cosmetic uses, and office supplies.

PETG Mirror is supplied in 1-sided polyfilm or papermask 1 or 2 sides. Call for quotation, availability and delivery information.



Property	ASTM	Units	Value
Specific Gravity	D-792	—	1.27
Gardner Impact Strength	D-3029 or D-5420	—	No break, 300 in/lbs.
Flexural Strength	D-790	psi	11,240
Flexural Modulus	D-790	psi	309,000
Tensile Strength	D-638	psi	6,990
Tensile Modulus	D-638	psi	301,000
Elongation .125 in. thick	—	%	75
Dielectric Constant	D-150	@100Hz	3.46
Dielectric Strength	D-149	volts/mil	420
Volume Resistivity	D-257	ohms/cm	6.0×10^{15}
Heat Distortion Temp. 264 psi	D-648	°F	145
Heat Distortion Temp. 66 psi	D-648	°F	164
Vicat Softening Point	D-1525	°F	180
Coefficient of Thermal Expansion	D-696	in/(in-°F)	0.00003

Run-to-Size Available

POLYCARBONATE MIRROR SHEET

Polycarbonate Mirror Sheet

Plaskolite offers polycarbonate mirror sheet for better strength, security and flame resistance. Polycarbonate mirror is available in .118" and .236" in 48" x 96" sheet. Plaskolite also offers this in See-Thru, First Surface and ARmadillo scratch-resistant sheet. Bronze and Gray available in 118". This material is supplied in papermask 2 sides.

Call for quotation, availability and delivery information.



Item #	Size	Qty.	Skid Qty.
P100002M	.118" 48" x 96" Papermask 2 sides	Bulk	40
P200002M	.236" 48" x 96" Papermask 2 sides	Bulk	40

Property	Test Method	Units	All Grades
General			
Specific Gravity	D-792	%	1.2
Water Absorption	D-570		0.15
Thermal			
Deflection Temperature			
264 psi	D-648	°F	270
66 psi			280
Coefficient of Thermal Expansion	D-696	in/(in-°F)	3.75 x 10 ⁻⁵
Coefficient of Thermal Conductivity	C-177	Btu-ft (hr-ft ² -°F)	0.1125
Mechanical			
Tensile Strength, Yield	D-638	psi	9,000
Tensile Strength, Ultimate			9,500
Tensile Modulus			345,000
Compressive Strength	D-695	psi	12,500
Flexural Strength	D-790	psi	13,500
Flexural Modulus			345,000
Izod Impact Strength	D-256	ft.-lb/in. Notch	12-16
Gardner Impact (1/2" Diameter Dart)	D-5420	lb-in.	>320
Flammability			
Horizontal Extent of Burning	D-635	in.	<1
Horizontal Time of Burning		min.	<1
Self Ignition Temperature	D-1929	°F	1077
Flash Ignition Temperature			872

Run-to-Size Available

PROTECTIVE COVERINGS & BACKINGS

Protective Coverings & Backings for Mirror Sheet

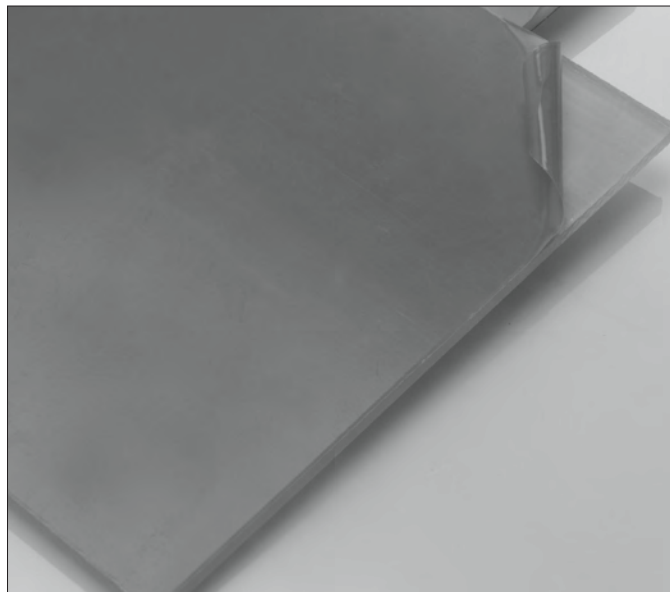
Plaskolite offers a variety of protective coverings and backings for acrylic, polycarbonate and PETG mirror sheet products where extra protection or added performance is required.

Protective Coverings

- **Film** - 2 mil clear or blue protective co-ex film offered standard on all stock items. 3 mil film also available.
- **Papermask** - White or brown papermask available on one side or two sides.

Backings

- **FABBACK®** - FABBACK is the gray paint backing on all of our mirrored sheet products. This backing is the most durable, toughest scratch-resistant backing in the acrylic mirror industry. Offered on all acrylic, polycarbonate & PETG mirror sheet products.
- **Papermask** - White or brown papermask available as additional protection over the FABBACK for ease of handling, fabrication and working with mirror sheet.
- **Pressure Sensitive** - This adhesive backing is used to mount mirror sheet to another substrate or surface. It is a white paper backing that transfers an adhesive on the sheet once the white paper is pulled off. Mounting a mirror becomes a simple procedure of cutting to a desired size or shape, peeling off the release paper and carefully pressing in place. There is a caution, however, the mirror cannot be moved or adjusted after being pressed in position, so extreme care is required in the placement. This replaces adhesives applied by hand that can cause messy edges and non-uniform adhesive coverage.



For best results, we recommend sealing the surface to which the mirror is to be applied with a good quality paint or sealer. A flat, smooth surface is preferred.

The pressure sensitive backing is available on acrylic, polycarbonate, and PETG mirror sheet.

Run-to-Size Available

TERMS & CONDITIONS



Plaskolite, LLC. Limited Warranty

Statement of warranty

This Warranty is given ONLY to the IMMEDIATE PURCHASER who buys for commercial use in the ordinary course of such purchaser's business (the "Purchaser").

Plaskolite, LLC. ("Plaskolite") warrants to the Purchaser that the Yellowness Index (YI) on Plaskolite clear acrylic (the "Product") shall be less than 4.0 during a 10 year period from the date of purchase (the "Warranty Period") as measured with a Hunter Lab Spectrocolorimeter according to ASTM D1925, subject to the limitations set forth herein. This Warranty applies to the Product exposed to ultraviolet rays in normal interior and exterior applications, which shall exclude extreme weather conditions. This Warranty is in addition to the warranty regarding conformance of Plaskolite material with Plaskolite's specifications set forth in Plaskolite's Terms and Conditions (the "Specification Warranty").

Obtaining warranty performance

If the Product fails to conform to this Warranty, the Purchaser may, within the Warranty Period, and no later than thirty (30) days following discovery of the failure to conform to this Warranty, send written notice of such failure to conform to this Warranty along with proof of purchase to Plaskolite, LLC, Industrial Division, P.O. Box 1497, Columbus, Ohio 43216. Upon receipt of the written notice, Plaskolite will, at its sole option, (i) replace that portion of the Product that failed to conform to this Warranty or (ii) refund the purchase price of that portion of the Product that failed to conform to this Warranty. Plaskolite will not be responsible for any costs of removing any portion of the Product that failed to conform to this Warranty or of reinstalling the replacement. Replacement or refund as described herein is the Purchaser's sole and exclusive remedy for failure of any part of the Product to conform to this Warranty, or any warranty which may arise by contract or operation of law. Repair or replacement of any part of the Product that failed to conform to this Warranty does not extend the Warranty Period.

Limitations and disclaimers

To the extent permitted by law, and subject to the Specification Warranty, THIS WARRANTY IS EXCLUSIVE, IN LIEU OF AND EXCLUDES ALL OTHER WARRANTIES, EXPRESS OR IMPLIED, INCLUDING MERCHANTABILITY AND FITNESS FOR A PARTICULAR PURPOSE. To the extent permitted by law, PLASKOLITE'S LIABILITY IS LIMITED SOLELY AND EXCLUSIVELY TO REPAIR OR REPLACEMENT AS SET FORTH HEREIN AND DOES NOT INCLUDE ANY LIABILITY WHATSOEVER FOR ANY INCIDENTAL, CONSEQUENTIAL OR OTHER DAMAGES OF ANY

KIND WHATSOEVER, WHETHER A CLAIM IS BASED UPON A THEORY OF CONTRACT, NEGLIGENCE OR TORT.

This Warranty is made only to Purchaser and is not transferable. No employee, agent or other person is authorized by Plaskolite to assume for Plaskolite any liability in addition to that set forth herein or to make any further warranties on Plaskolite's behalf. This Warranty is void and of no effect if any of the above exclusions apply.

Miscellaneous

This Warranty may be supplemented or changed from time to time. In the event that any provision of this Warranty should be or become invalid and/or unenforceable during the Warranty Period, the remaining terms and provisions hereof shall continue in full force and effect. This Warranty is given in, and is intended to be construed under the internal laws of, the State of Ohio.

TERMS & CONDITIONS

Plaskolite, LLC. Terms & Conditions

1. Terms exclusive:

This document, together with the agreements, if any, specified herein, and including the terms and conditions on the reverse hereof, constitutes the complete, exclusive and final agreement of the Buyer identified herein ("Buyer") and Plaskolite, LLC. ("Seller") and may not be added to, modified, superseded or altered except by written agreement or modification signed by Seller's authorized representative, notwithstanding any other additional or modifying terms or conditions which may now or in the future appear on Buyer's order, acknowledgment or other forms (all of which are objected to by Seller without future notification), and notwithstanding any shipments, tenders of delivery, acceptance of payments, or other similar acts of Seller. Buyer's acceptance of any performance by Seller shall be taken as Buyer's acceptance of these terms and conditions
NO PERSON (EXCEPT AN AUTHORIZED OFFICER OF SELLER) IS AUTHORIZED TO BIND SELLER TO ANY ORDER EXCEPT ACCORDING TO THE TERMS AND CONDITIONS ON BOTH SIDES HEREOF. ACCEPTANCE OF ANY ORDER IS SUBJECT TO FINAL CREDIT APPROVAL BY SELLER.

2. Delivery:

Unless otherwise specified herein, delivery of the goods, and services. If any, specified herein ("Goods") shall be F.O.B. point of shipment. Any delivery date specified herein is approximate only. Seller assumes no liability for failure or delay in performance until 5 days after written notice of intention to cancel shall have actually been received by Seller, and Buyer shall be obligated to accept any conforming Goods shipped by Seller during such period. Acceptance of shipment by a common carrier, designated shipper or licensed public truckman, or allocation of Goods to Buyer at premises other than Seller's delivery to Buyer's representative or designee (if Seller's trucks and drivers effect such delivery), or mailing of an invoice by Seller to Buyer, whichever of the foregoing first occurs, shall constitute tender of delivery. Upon tender of delivery, title shall pass to Buyer, subject to Seller's right of stoppage in transit and to any interest of Seller reserved to secure Buyer's payment or performance. In the instance of Goods held subject to Buyer's instructions, Goods for which Buyer has failed to supply shipping instructions, or in any case where Seller, in its sole discretion, determines any part of the Goods should be held for Buyer's account, Seller may invoice the Goods and Buyer agrees to make payment at the maturity of the invoice so rendered. Goods invoiced and held at any location, for whatever reason, shall be at Buyer's risk and Seller may charge for (but is not obligated to carry) insurance and storage at prevailing rates. Partial deliveries shall be accepted by Buyer and paid for at contract prices and terms. When Buyer has declared or manifested an intention not to accept delivery in accordance with any order, no tender shall be necessary but Seller may, at its option, give notice in writing to Buyer that Seller is ready and willing to deliver and such notice shall constitute a valid tender of delivery.

3. Prices:

All prices of the Goods are subject to change or withdrawal without notice. Unless otherwise stated by Seller, prices and pricing policies will be those set forth in Seller's published price lists or Seller's pricing policies in effect at time of delivery. In the event Buyer's order is changed in any respect (if and when permitted by Seller), Seller may adjust the price accordingly. Unless otherwise specified herein, prices are exclusive of any excise, sales, use or similar taxes, duties, quotation fees or other governmental impositions which Seller may be required to pay or collect under any existing or future law upon or with respect to the sale, use, storage, consumption, purchase, transportation or delivery of the Goods and any such applicable taxes, etc., shall be paid by and/or for the account of Buyer.

4. Payment, security interest:

Unless otherwise stated herein by Seller, the terms of payment shall be one percent 10 days, net 30 days. Such (or any other) discount terms shall be strictly enforced by Seller. If at any time in Seller's reasonable discretion, Buyer's credit should become unsatisfactory to Seller, cash payments on delivery or other satisfactory security, including security for outstanding balances, may be required of Buyer by Seller as a condition to further deliveries. All installment deliveries shall be separately invoiced and paid for when due. Any payment not made to Seller when due shall be subject to a carrying charge of one and one half percent (1 1/2%) per month on the unpaid balance until paid and Seller may defer further deliveries to Buyer under this order or any other order between Buyer and Seller, or may cancel the undelivered balance or balances under this or any such other order. Buyer shall have no right to offset any amount whatsoever against any payment or other obligation which Buyer may owe to Seller under this order. Seller reserves a security interest in the Goods to secure Buyer's payment of the purchase price and any other charges owed by Buyer, and Buyer agrees that Seller may (but is not obligated to) take such action as Seller deems advisable to evidence and perfect such interest and that Buyer will cooperate with Seller in taking such actions, and Buyer hereby authorizes Seller to file financing statements. All payments shall be made payable to the order of (Plaskolite, LLC, P.O. Box 636087, Cincinnati, OH 45263-6087).

5. Casualty and availability of supplies:

Delivery of all or any part of the Goods is contingent upon Seller's ability to obtain goods (including the Goods), supplies, raw materials and services through its regular and usual sources of supply. If by reason of any contingency beyond Seller's control, including (but not limited to) war, terrorist activities or threats, governmental requests, restrictions or regulations, fire, flood, casualty, accident, or other acts of God, strikes or other difficulties with employees, delay or inability to obtain goods (including the Goods), labor, equipment, material and service through Seller's usual sources, failure or refusal of any carrier to transport materials, delay in transport thereof,

TERMS & CONDITIONS

or any other similar occurrence, Seller is not able to meet anticipated deliveries. Seller shall not be liable therefore and may, in its discretion without prior notice to Buyer, postpone the delivery date(s) for a time which is reasonable under all the circumstances.

6. Inspections, acceptance, and returns:

Each delivery of Goods shall be inspected by Buyer for observable damage and/or non-conformity at the time of delivery. Failure to so inspect shall constitute a waiver of Buyer's rights of inspection and shall constitute an unqualified acceptance of the Goods. If, after such inspection, Buyer attempts to reject any Goods, Buyer shall fully specify all claimed damage or non-conformity in a notice of rejection sent to Seller within ten days of Buyer's receipt of the Goods. Buyer's failure to so specify shall constitute an unqualified acceptance of the Goods and a waiver of that damage or non-conformity. No Goods shall be returned to Seller without Seller's prior written agreement and any Goods returned by Buyer shall be returned in the same condition as when delivery was effected by Seller. No deductions for shortages, damages or defective Goods will be allowed without Seller's inspection of the Goods and approval of the deduction. Unauthorized deductions may affect the status of Buyer's account with Seller. Orders entered on Seller's books cannot be countermanded nor deliveries deferred or Goods returned except upon Seller's written consent and upon terms that will indemnify Seller against loss. If Goods are defective, Seller will bear the cost associated with return and restocking. If Goods are not defective, and Seller agrees to accept return of Goods, a minimum of costs of restocking (15%) plus actual cost of return freight will be deducted from any credit due Buyer.

7. Patents, etc.:

Buyer will defend, indemnify and hold harmless Seller, its successors and assigns from and against any and all claims, demands, lawsuits, liability and judgment for loss, costs, damages, fines, penalties and expenses of every kind and nature, threatened, incurred, arising out of or in connection with any alleged infringement of any patent, issued by any country, by any Goods supplied by Seller hereunder and made specially for Buyer; provided that Seller shall give prompt notice to Buyer of any such claim etc. and an opportunity to settle or defend the same as Buyer may see fit; and provided further that Seller shall render every reasonable assistance which Buyer may require of it in connection with such claims, etc. Seller reserves the right to cancel this order, without liability with respect to any Goods, the manufacture, sale and use of which in the opinion of Seller would infringe any patents now or hereafter issued.

8. Limited warranty, warranty disclaimers and limitations of remedies and liabilities:

Seller warrants that the Goods will conform (subject to variations acceptable within the industry) to the specifications set forth

herein. Any Goods determined by Seller to have been defective or not in accordance herewith at time of delivery will be replaced or credited, at Seller's option, provided Buyer has acted in accordance with Paragraph 6 hereof. No item shall be deemed defective or not in accordance herewith if such item conforms to approval samples or previously accepted materials or if such item fits Buyer's parts, jigs, or equipment or otherwise reasonably accommodates the purpose for which the goods are generally intended.

Except as set forth above, Seller make NO OTHER WARRANTIES concerning the Goods whatsoever. SELLER DISCLAIMS AND EXCLUDES ALL OTHER EXPRESS WARRANTIES AND ALL IMPLIED WARRANTIES, INCLUDING WITHOUT LIMITATION THE IMPLIED WARRANTIES OF MERCHANTABILITY AND FITNESS FOR A PARTICULAR PURPOSE concerning the Goods. Buyer acknowledges and agrees that Seller's obligation described in this Paragraph 8 is the sole remedy bargained for by Buyer IN LIEU OF ALL OTHER EXPRESS AND IMPLIED WARRANTIES. In no event will Seller's liability exceed the paid purchase price of the Goods. Seller's obligations described in this Paragraph 8 shall be BUYER'S SOLE AND EXCLUSIVE REMEDY AGAINST SELLER FOR ANY LIABILITY WITH RESPECT TO THE GOODS WHETHER ANY CLAIM FOR RECOVERY IS BASED UPON OR ARISES OUT OF THEORIES OF CONTRACT, NEGLIGENCE, TORT (INCLUDING STRICT LIABILITY) OR OTHERWISE. Buyer agrees that NO OTHER REMEDY SHALL BE AVAILABLE to Buyer and IN NO EVENT SHALL SELLER BE LIABLE FOR ANY INCIDENTAL OR CONSEQUENTIAL DAMAGES, including without limitation loss of income, loss of time, loss of sales, cost of replacement items, claims asserted by Buyer's customers, injury to personal property, or injury to any person, whether or not occasioned by Seller's negligence. Buyer agrees to indemnify and hold harmless Seller from any claims brought by Buyer's customers against Seller regarding the Goods, even if such customers have a statutory or other right to assert such claims.

9. Statutory compliance:

Seller continues to attempt to comply with all applicable laws, standards and specifications. However, Seller is not responsible for compliance with any laws, standards or specifications applicable to the Goods, their delivery, use, handling, labeling, transportation or disposal, whether of general or particular application, unless Buyer has furnished specific written notice thereof prior to Seller's entry of Buyer's order.

10. Product labels, information:

Buyer acknowledges that it has received and is familiar with Seller's and any manufacturer's labeling and literature concerning the Goods and will forward such information to its employees, agents, and customers.

TERMS & CONDITIONS

11. Permissible variations:

Seller has the right, without giving notice to Buyer, prior to the delivery of Goods to Buyer to make any changes in the composition of the Goods which, in the opinion of Seller, do not affect the general characteristics of properties to the Goods. In addition, Seller may make any change or variation in the Goods which is within governmental or industry standards or specifications applicable at the time of manufacture without giving notice to Buyer. Buyer will accept any Goods which may incorporate any changes in the composition or specifications, and any increase in price resulting from such change will be paid by Buyer. In addition, if the Goods to be supplied by Seller to Buyer hereunder shall be made specifically for Buyer and are not customarily carried in stock by Seller, then a ten percent (10%) overage or underage in delivery of the amount specified herein shall constitute fulfillment of the order and such Goods delivered will be paid for at the unit price specified herein.

12. Cancellation:

Seller may cancel or terminate all or part of the contract arising from or evidenced by this document immediately upon the happening of any of the following: Buyer's material delinquency of any of its obligations hereunder or with respect to any other order or transaction with Seller; the insolvency of Buyer; the commencement on any case under Title 11 U.S.C., as amended (the "Bankruptcy Code"), or similar law of another country for, by or against Buyer; the appointment of a receiver for Buyer under any applicable law; Buyer's suspension or termination of business or assignment for the benefit of creditors; or any event, whether or not similar to the foregoing, which in Seller's good faith belief materially impairs the prospect of payment or performance by Buyer hereunder. Seller's rights to cancel or terminate set forth herein may be exercised by Seller without liability.

13. Representations by agent or representative:

The terms of this document shall govern the liability and obligations of Seller in regard to the sale of Goods, whether the sale was procured directly by Seller or indirectly through an authorized sales representative. No agent, employee or representative of Seller has any authority to bind Seller to any additional or contrary affirmation or representation concerning the Goods sold under this document. Unless an affirmation or representation is specifically included within this document or is in writing signed by an authorized officer of Seller, it shall not be enforceable by Buyer or by any person claiming by or through Buyer. The ORAL REPRESENTATIONS of Seller's agents and employees DO NOT CONSTITUTE WARRANTIES and do not constitute part of the contract evidenced by this document.

14. Miscellaneous:

All sales are subject to approval by Seller's credit department. The contract evidenced hereby will be governed by the local laws of the State of Ohio. If any of the provisions hereof shall be

held invalid, illegal or unenforceable, the validity, legality, and enforceability of the remaining provisions shall in no way be affected or impaired thereby.

BUYER CONSENTS AND SUBMITS TO THE SOLE EXERCISE OF JURISDICTION BY ANY COURT OF COMPETENT JURISDICTION LOCATED IN FRANKLIN COUNTY, OHIO.

No right or interest in the contract evidenced by this document shall be assigned by Buyer and no delegation of any obligation owed by Buyer shall be made without prior written permission of Seller.

The individual rights and remedies of Seller reserved herein shall be cumulative and additional to any other or further remedies provided in law or equity. Waiver by Seller of performance or inaction with respect to Buyer's breach of any provision hereof, or failure of Seller to enforce any provision hereof which may establish a defense or limitation of liability, shall not be deemed a waiver of future compliance therewith or a course of performance modifying such provision, and such provision shall remain in full force and effect as written.

As used herein, "Buyer" and "Seller" include the respective heirs, executors, personal representatives, successors and permitted assigns or each.

Monetary denominations designated herein shall be in U.S. Dollars.

Notwithstanding anything herein to the contrary, the United Nations Convention on Contracts for the International Sale of Goods and the laws of any other jurisdiction shall have no application to the terms and conditions of sale and the actions hereunder and contemplated hereby.

IN ALL CASES CLERICAL ERRORS ARE SUBJECT TO CORRECTION.

15. Buyer's obligation to purchase specially manufactured material:

If all or any part of the material to be supplied to Buyer was specially manufactured by Seller for sale to Buyer, then notwithstanding the application of force majeure or Buyer's failure to issue a release for such material, Buyer shall be required to purchase material plus or minus 10% of the original order quantity, and accept delivery of all such material, and any raw material or intermediary procured or produced for manufacture of same. All finished material will be purchased at the price then prevailing. Raw material or intermediaries will be purchased at Seller's cost of procurement or production.

WORLDWIDE SUPPORT

Worldwide Support

Plaskolite maintains manufacturing and distribution facilities in Columbus, OH; Zanesville, OH; Compton, CA; Ontario, CA; Olive Branch, MS; Monterrey, MX; Grand Saline, TX; and Doesburg, Holland, for fast product delivery and local support of its distributor network.



***Columbus, Ohio, USA**
Manufacturing and Distribution Headquarters



***Zanesville, Ohio, USA**
Manufacturing and Distribution



Compton, California, USA
Manufacturing



Redlands, California, USA
Distribution



Olive Branch, Mississippi, USA
Manufacturing and Distribution



Monterrey, Mexico
Manufacturing and Distribution



Grand Saline, Texas, USA
Manufacturing and Distribution



Doesburg, Holland
Distribution

*Plaskolite's Quality Management System is certified as being in conformance with the ISO9001:2008 standard. Please contact Plaskolite for technical and distribution information.



PLASKOLITE

Distributed by:  Polymershapes

Call: 1 (866) 437-7427

Email: info@polymershapes.com

Copyright © Plaskolite, LLC.

2/18

Printed in U.S.A.

OPTIX®, DURAPLEX®, DURALENS®, FABBACK®, KSH®, and VIVAK® are registered trademarks of PLASKOLITE, LLC.