



FALCONBOARD™
Stronger. Flatter. Greener. Better.

BUILD

The Environmentally Responsible Graphic Board for Point of Purchase Applications

Hexacomb® Falconboard™ Build is a paper-based graphic display board which is structurally engineered for demanding three-dimensional point-of-purchase (POP) applications.

Falconboard Build is designed as a strong, non-petroleum-based option to market heavier/bulkier products at point-of-purchase. These include food and beverage products (liquor or soft-drink bottles, heavier food packages); lawn and garden items; consumer electronics; toys; books, etc.

Falconboard Build's printing capabilities equal that of foam boards, including use of wide format, screen and digital printing solutions. Its unique structure can handle the most demanding of graphic display requirements due to its high rigidity and dimensional stability.



Key Features and Benefits

Results

PERFORMANCE

- | | |
|--|---|
| <ul style="list-style-type: none"> • Compression strength = 70 lbs. per sq. inch • Excellent brightness value (88) • Superior surface – flat and smooth • High rigidity and dimensional stability • Lightweight | <ul style="list-style-type: none"> • Withstands the weight of heavy products • Excellent printability – bright colors, no “read-through”, no topography in images • Tough core resists denting • Durable - scratch and warp resistant • No additional backing required |
|--|---|

VERSATILITY

- | | |
|--|---|
| <ul style="list-style-type: none"> • Custom sizes available • Works well with most inks and adhesives • Works with most commercial connective systems such as edge tape and plastic or metal edging or channels | <ul style="list-style-type: none"> • Well-suited for a diverse range of applications and fabrication • Aesthetically pleasing appearance • Easy-to-use and store • Use and reuse for multiple functions |
|--|---|

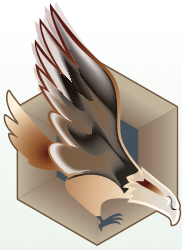
SUSTAINABILITY

- | | |
|--|--|
| <ul style="list-style-type: none"> • Made with SFI* certified, all natural, renewable virgin and post-consumer recycled fibers • 100% recyclable • Baler friendly • Renewable and reusable | <ul style="list-style-type: none"> • Promotes closed loop recycling • Lessens dependence on petroleum based resins • Lessens landfill waste • Recyclable with corrugated waste • Increases corporate environmental responsibility and stewardship |
|--|--|



*SFI is the Sustainable Forestry Initiative, a fully independent, charitable organization dedicated to promoting sustainable forest management. Its certification standard is based on principles that promote sustainable forest management, including measures to protect water quality, biodiversity, wildlife habitat, species at risk, and forests with exceptional conservation value.

Made in the USA



FALCONBOARD™
Stronger. Flatter. Greener. Better.

BUILD

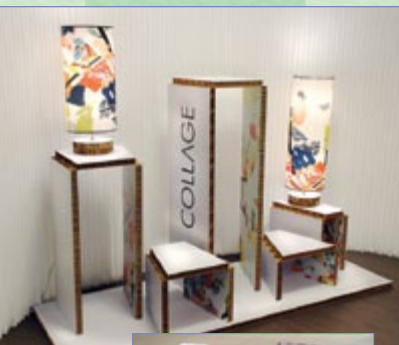


Falconboard Meets Green Demands

- Made from reusable, renewable and 100% recyclable virgin kraft paper honeycomb material.
- Consists of SFI certified fabricated natural kraft core with white clay-coated or natural linerboard facings.
- Produced with up to 20% recycled, chlorofluorocarbon-free paper content.
- Emits less than 1% volatile organic compounds (VOCs).
- Excellent “green” alternative to traditional foam boards made from polyethylene (PE), polystyrene (PS) or polyvinylchloride (PVC).
- Delivers high performance print solutions directly onto an environmental friendly, recyclable, rigid substrate.
- Direct print to rigid Falconboard eliminates the cost and labor step of mounting.

Falconboard Meets Your Demands

- Custom sizes available
- Product can be shipped boxed or bulk
- Excellent brightness value (88)
- Available in all white
- Superior surface – flat and smooth
- Edging solutions include products from ProEdge, Drytac and Tangent
- Cutting solutions from Zund, Multicam, Kongsberg, Gerber
- Die cutting solutions available from our internal Design Center



Standard thickness	Sizes from 3/16"		
Standard sheet size	48"x 96", 48"x 120", 60"x 96", 60"x 120"		
Custom sizes	24", 30", 48", or 60" x up to 144"		
Board Weight*	1/4" thick = 11.4 lbs	1/2" thick = 13 lbs	1 1/2" thick = 19.4 lbs
	3/8" thick = 12.2 lbs	3/4" thick = 14.6 lbs	2" thick = 22.6 lbs
		1" thick = 16.2 lbs	

*Per one board, 46"w x 96"h.

Distributed by:  **Polymershapes**

Call: 1 (866) 437-7427
Email: info@polymershapes.com
www.polymershapes.com

