



Dimensional Displays

DIBOND®

CHARACTERISTICS

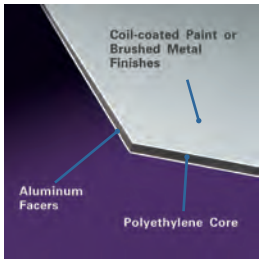
- Superior surface protects expensive digital & screen-printed graphics
- Provides excellent durability in outdoor applications
- Excellent for digital printing as well as mounting
- Can be routed and returned to add dimension
- Flattest panel on the market
- Won't bow or oil can

FABRICATION

- Mounting
- Digital & Screen Printing
- Painting
- Saw Cutting
- Routing
- Forming Curves
- Repositionable Vinyl

APPLICATIONS

- Exterior Signage
- Wayfinding
- Branding
- Interior Signage
- Wall Displays



PRODUCT AVAILABILITY

GAUGES	FACERS	SIZE
2MM	WHITE/WHITE	4'x8', 4'x10'
3MM	WHITE/WHITE	4'x8', 5'x10'
	WHITE/BLACK	4'x8', 4'x10'
	ALL COLORS*	4'x8'
4MM	METAL SERIES*	4'x8'
	WHITE/WHITE	4'x8'

*PLEASE CONTACT YOUR SALES REP FOR MORE INFORMATION AND AVAILABILITY

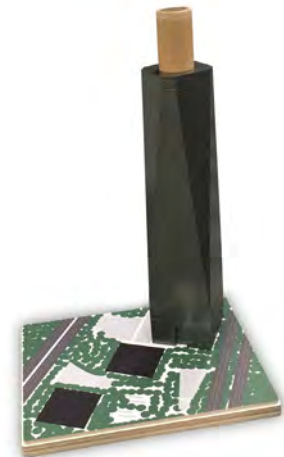
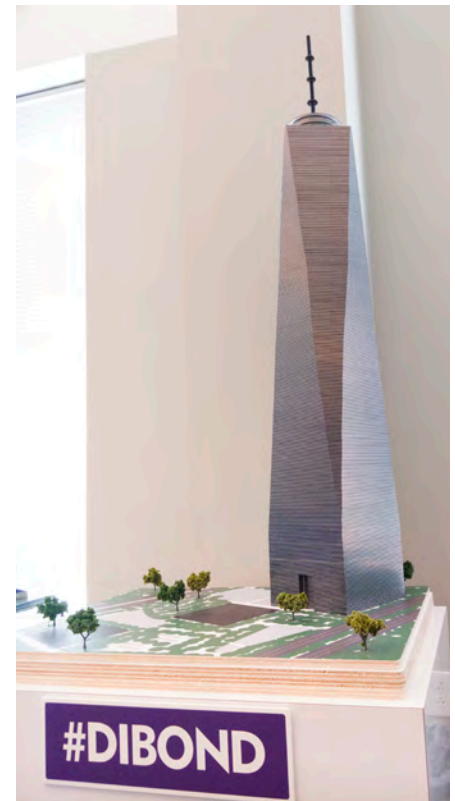
CASE STUDY: ICONIC DESIGN ONE WORLD TRADE CENTER RECREATED WITH DIBOND®

At 1,776 feet tall, NYC's One World Trade Center is the tallest building in the Western hemisphere. Designed by architect David Childs of Skidmore, Owings, & Merrill, LLP in New York, the 104-story office tower features an iconic design comprised of eight elongated isosceles triangles topped by the One World Observatory and a 408-foot tall spire.

3A Composites USA chose to recreate the One World Trade tower in a 200th scale model for display at last fall's SGIA Expo in Las Vegas, Nevada, just days following the 15th anniversary of the 9/11 terrorist attacks. Charlotte-based Classic Graphics was enlisted to design and fabricate the 54-inch tall model, which includes a 9-inch spire. To do justice to this iconic design, 3mm Dibond® Brushed Silver ACM was chosen to recreate the light-reflective look of the tower.

"The tower is built square at the base," said creative manager Dan House of Classic Graphics. "So we made a diamond inside and shaved the sides down. The model is a diamond inside a square. We just kept making the shape bigger and bigger as we moved down the tower." A total of 294 pieces of 3mm Dibond® were routed with a Zund digital cutter – each with a circular cutout designed to fit over a 4-inch wide corrugated tube – and adhered with permanent adhesive tape to create the 200th scale office tower model.

The model's representation of the One World Observatory was built with 11 circular rings – including six 5-inch diameter rings and five 4.5-inch diameter spacer rings – routed from Dibond® Brushed Silver, which were adhered with permanent adhesive tape and installed over the corrugated tube. The tower's 9-inch spire was built with a threaded metal rod, which was painted black and installed on top of the model's observatory.



The model's landscape-printed base was fabricated with a total of four pieces of 12mm Banova® Print – three panels measuring 30 inches by 24 inches and the top panel measuring 29.5 inches by 23.5 inches – which were adhered together with permanent adhesive tape. The landscape design was printed on the top Banova® Print layer featuring bright white PRO Series facers with a Durst Rho 1000 UV-flatbed printer. The model's printed landscape base was finished with miniature artificial shrubbery; and, the tower was screwed to the base.

"You really can't underestimate the attention to detail that it takes to create a project like this. It took two of us an entire day just to route the Dibond and build the display.... All of the materials we used – including the Dibond® and Banova® Print – were awesome. We loved working with the new Banova® Print. It prints and receives ink just like styrene," said House. "The Dibond® Brushed Silver cut with nice clean edges," added Kim Kiker, Classic Graphics account representative."

"The Dibond® Brushed Silver finish was chosen to recreate the light-reflective look of the tower...and cut with nice clean edges!"



Not sure if DIBOND® is what you need?

Check out some of our other brands! Our materials are designed to solve any need for dimensional signage, displays or environment applications.

Distributed by:  Polymershapes

Call: 1 (866) 437-7427
Email: info@polymershapes.com



Fome-Cor®, Sintra®, Gator®, Dispa®, Hylite®, and Dibond® are registered trademarks of 3A Composites USA, Inc. ValuBoard™, FiberMate™, e-pvc™ and e-panel™ are trademarks of 3A Composites USA, Inc. ©3A Composites 2018. All Rights Reserved.

