

The Industry's Most Complete Line of Chemical Resistant Sheet and Rod

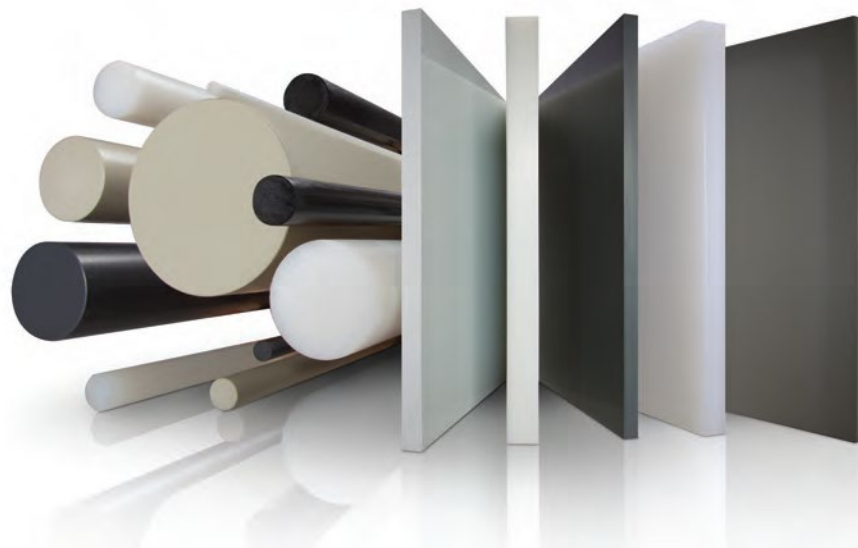


SIMONA's versatile range of PFA, E-CTFE, PVDF, CPVC, PP, HDPE and PVC grades

- Resists acids, bases, solvents and oxidizers
- Performs at service temperatures from 140 to 425°F / 60 to 218°C
- Meets Semicon FM 4910 and UL 94 V-0 flame test criteria
- Includes fabric backed sheet for dual laminates

Ideal for fabricating and machining of:

- Tanks, vessels and baths including dual laminates
- Chemical mixing, dosing and pumping equipment
- Semiconductor wet process equipment
- Industrial cleaning and finishing stations
- Clear protective shields and process view windows
- Fume hoods, vents and ducting
- Scientific furniture, equipment and work surfaces



Select from the Industry's Widest Range of Corrosion-Resistant Sheet and Rod

covering all chemical groups and service temperatures to 425°F (218°C)*

← EXCELLENT TO POOR →

SERVICE TEMPERATURE			STRONG ACIDS	STRONG BASES	SOLVENTS	STRONG OXIDIZERS	DESCRIPTION	MIN/MAX SHEET THICKNESS (IN.)	MIN/MAX ROD DIAMETER (IN.)	WELDING ROD	SEMICON FM 4910	UL 94 V-0	FABRIC BACKED LAMINATES
425°F / 218°C		SIMONA® PFA-M	█	█	█	█	High flexural strength and crack resistance. Excellent gloss repels surface contaminants.	Extruded 0.125 - 0.500 Molded 1.0	—	█	█	█	█
		SIMONA® E-CTFE 901	█	█	█	█	Exceptionally smooth surface. Ideal for high purity applications.	0.125 - 1.0	—	█	█	█	█
		SIMONA® E-CTFE 902	█	█	█	█	Heavy gauge sheet grade >1 in. (25.4 mm). Performance and appearance similar to 901 grade.	1.0 - 2.0	—	█	█ ¹	█	█
300°F / 149°C		SIMONA® PVDF 740 Homopolymer	█	█	█	█	Homopolymer grade. Higher rigidity and temperature resistance than 2850 grade.	0.125 - 2.0	0.39 - 19.7	█	█	█	█
		SIMONA® PVDF-C 2850 Copolymer	█	█	█	█	Copolymer grade. Tougher and more flexible than PVDF 740. Ideal for thermoforming.	0.250 - 2.0	—	█	—	█	█
		SIMONA® CPVC White, gray	█	█	█	█	Higher temperature limit than PVC Type I or Type II. Excellent strength and rigidity. Industrial (gray) and semicon (white) grades.	0.032 - 3.00	—	—	█	█	—
		SIMONA® CPVC Clear	█	█	█	█	Exceptional clarity, uniformity. Ideal for semicon and chemical process view windows.	0.125 - 0.500	—	—	█	█	—
250°F / 121°C		SIMONA® PP Homopolymer Polypropylene	█	█	█	█	Excellent strength-to-weight ratio. Resists staining, maintains excellent surface. Higher structural strength, stiffness than PP copolymer.	0.063 - 1.5	0.250 - 31.5	█	—	—	—
		SIMONA® PP Copolymer Polypropylene	█	█	█	█	Tougher, but less rigid than homopolymer. Superior low temperature impact resistance vs. HDPE, PP homopolymer.	0.125 - 1.5	—	█	—	—	█
195°F / 91°C		SIMONA® FR-PP Flame Retardant Polypropylene	█	█	█	█	Ideal for electrical cabinetry exposed to chemical contact.	0.125 - 1.0	—	█	— ²	█	—
180°F / 82°C 170°F / 77°C		SIMONA® HDPE	█	█	█	█	Smooth surface will not corrode or tuberculate. Resists cracking from pressure variations.	0.125 - 1.5	0.375 - 31.5	█	—	—	█
		SIMONA® PE 100 Pipe Grade	█	█	█	█	UV stabilized black for exterior applications. Exceptional impact resistance. Resists cracking below freezing temperatures.	0.500 - 2.0	—	█	—	—	█
140°F / 60°C		SIMONA® PVC Type I	█	█	█	█	Exceptional structural strength, rigidity. Versatile material for vessels, electrical cabinetry, fume hoods, ducting.	0.032 - 4.0	0.250 - 12.0	█	— ²	█	—
		SIMONA® PVC Type II	█	█	█	█	Higher impact resistance but less rigid than Type I. Tough, durable at below freezing temperatures.	0.062 - 2.0	—	—	—	█	—
		SIMONA® PVC GLAS Type I Clear	█	█	█	█	Higher rigidity than PVC Type II clear. Ideal for large surface area view windows, shields requiring more stiffness.	0.125 - 0.50	—	—	—	█	—
	SIMONA® PVC 4300 Type II Clear	█	█	█	█	Higher impact resistance than PVC Type I clear. Ideal for process view windows, clear shields.	0.062 - 2.0	—	—	—	—	█	—

*NOTE: General guidelines only. Users are advised to test for suitability relative to specific application conditions.

¹ Approved for limited use in thick walled and deep drawn formed parts. All tests at 73°F (22.8°C) in dry conditions unless otherwise noted.
² FM 4910 listed PP and PVC Type I grades available



Depending on material, sheet products are offered in gauges to 4 in. (10 cm) and solid rod in diameters to 31 in. (80 cm) with popular sizes in stock for rapid shipment.

Choose the best balance of cost and performance for your application:

- For exceptional chemical resistance at high service temperatures specify: SIMONA Fluoropolymers
- For economical all-around performance specify: SIMONA HDPE and PP
- For structural strength and UL 94 V-0 fire ratings specify: SIMONA PVC Type I, PVC Type II and CPVC

All sheet and rod products are backed by SIMONA's technical application and fabrication support—unequaled in the industry.

For sheet and rod samples, technical support, pricing and delivery, contact Customer Service at 866 501 2992

Typical Applications



Chemical dosing units: SIMONA® PP and FR-PP grades



Semicon valve box: SIMONA® CPVC Clear; PVC CRP-1



Pump components: SIMONA® HDPE



Industrial parts cleaner: SIMONA® PP homopolymer



Plating and pickling tanks, covers: SIMONA® PP



Scientific furniture and equipment: SIMONA® PP, HDPE



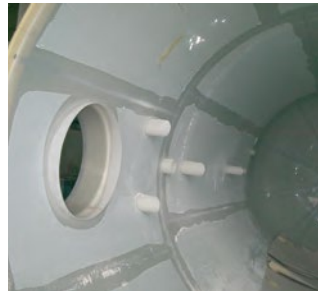
Semicon wet process tanks: SIMONA® PVDF 740, PFA-M



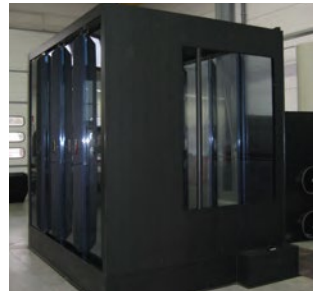
Fume vents, ducting: SIMONA® PVC Type I



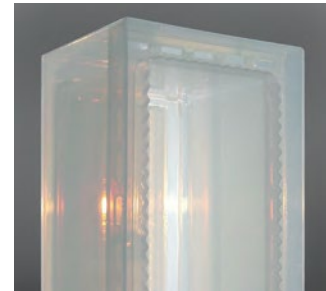
Storage and transport tanks: SIMONA® HDPE, PP



Dual laminate process tanks: SIMONA® PVDF 740 fabric backed



Industrial finishing booths: SIMONA® HDPE (clear PVC windows)



Semicon wet process tank: SIMONA® PFA-M, unique 48 in. (1219 mm) wide sheet

SIMONA offers the widest product range of PVC sheet and rod – FM 4910 rated sheet – chemical resistant materials from PVC, PP and PE to fluoropolymers – orthotics and prosthetics sheet – Boltaron aircraft sheet – plus proven products for boat building, outdoor furniture and many other industries.

Distributed by:  **Polymershapes**

Call: 1 (866) 437-7427
Email: info@polymershapes.com
www.polymershapes.com